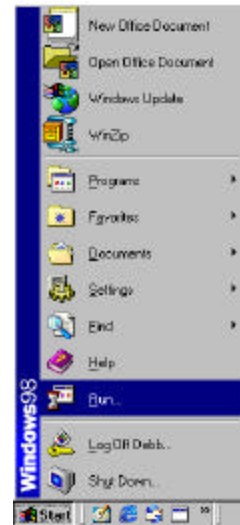
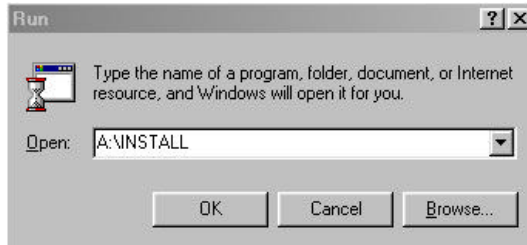


## Setting Up Power POS in Windows 95/98

## Power Pos Windows 95/98 Installation on Server or Stand-Alone PC

Load the program onto the machine that will be the **SERVER** or the **STAND ALONE PC**.

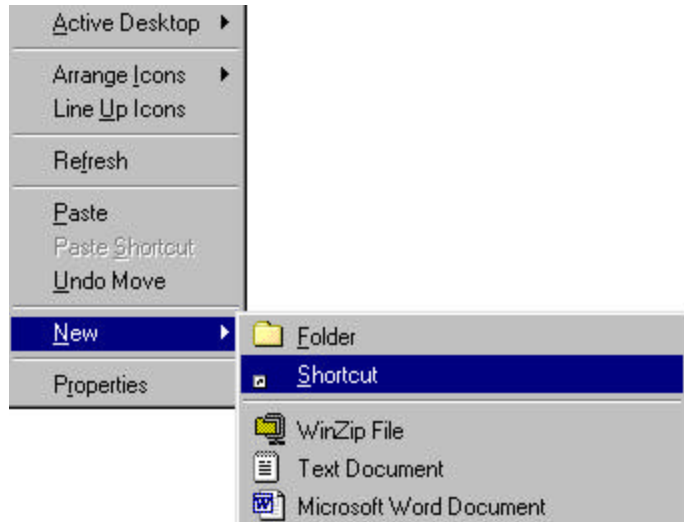
1. Left click on **START**, and **RUN**.
2. Type **A:\INSTALL** (with diskette #1 in the floppy drive) and the press **<ENTER>**.



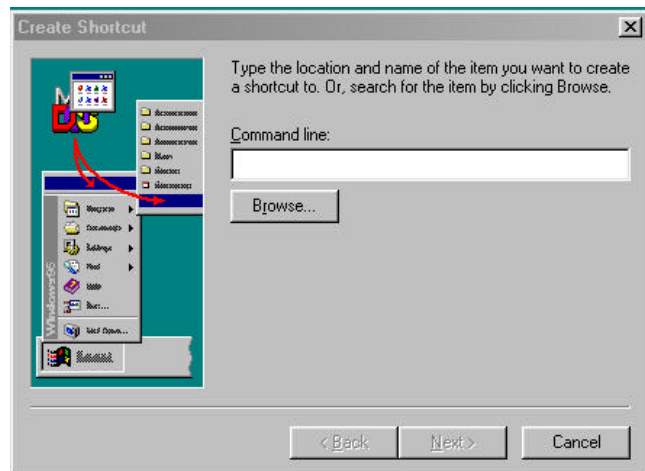
3. Follow the install instructions, selecting the desired directory (this is usually C:\Power)
4. Insert install disk #2 when prompted to do so.
5. When the installation is complete you will be prompted to **RESTART** your computer. Go to **START, SHUT DOWN** and **RESTART**.

## Create an icon on your desktop to run Power POS

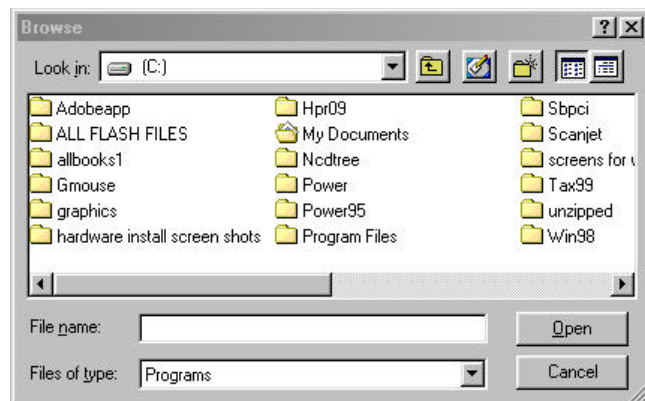
1. Right click on your desktop (make sure you choose a place that is free of any other program icons).
2. Select **NEW**.
3. Select **SHORTCUT**.



4. Left click on the **BROWSE** button.

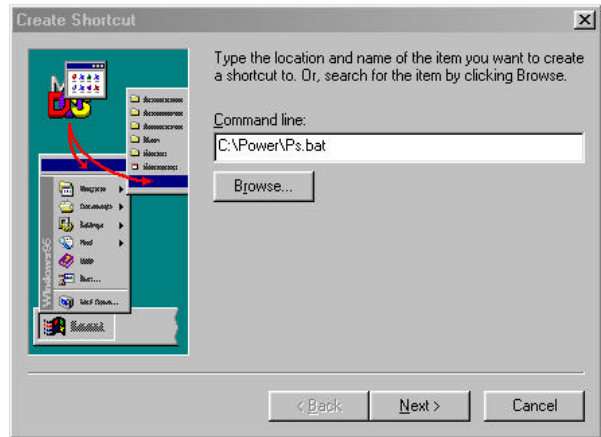


5. Browse the C-drive to locate the **POWER** folder:



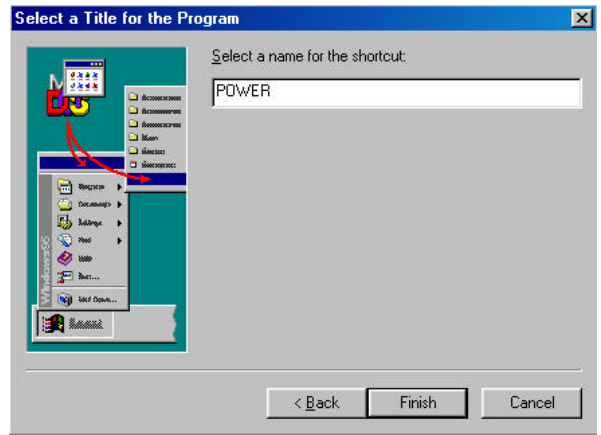
6. Double click on the **POWER FOLDER** to open it. Locate the **Ps (Ps.bat)** file and double click on it.

7. Click on **NEXT**.



8. Type in **POWER** (or any desired name).

9. Click on **NEXT**.



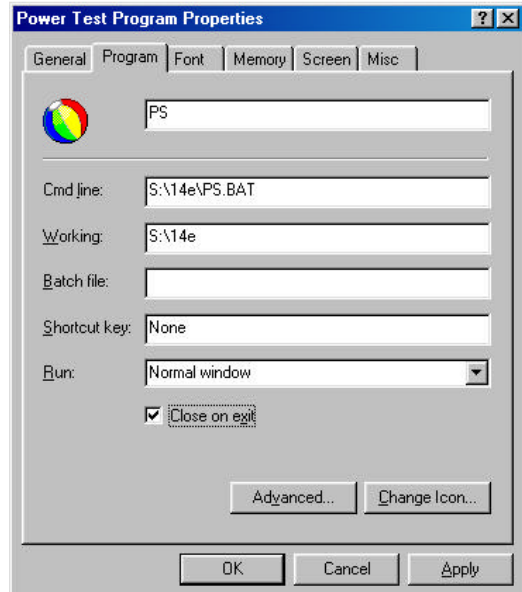
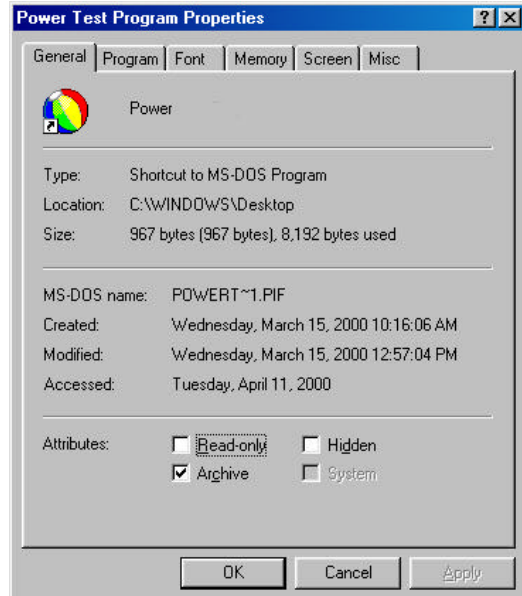
10. Select an icon.

11. Then click on **FINISH**.



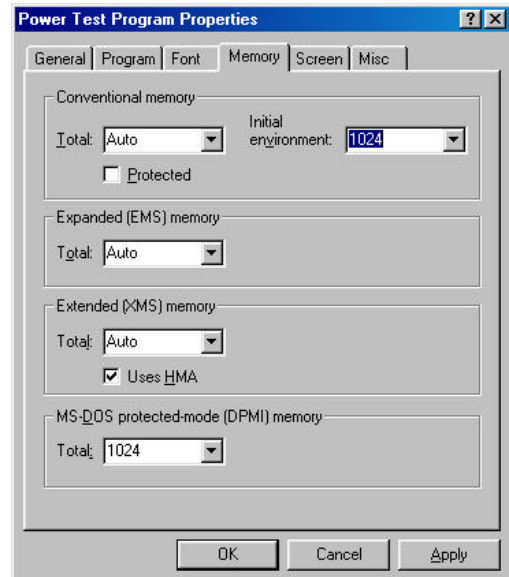
## Setting up the environment for the Power POS Program to run:

1. Right click on the **POWER POS** icon on your desktop.
2. Left click on **PROPERTIES**.
3. Click on the **PROGRAM** tab.
4. Select **CLOSE ON EXIT** (located near the bottom of this window).

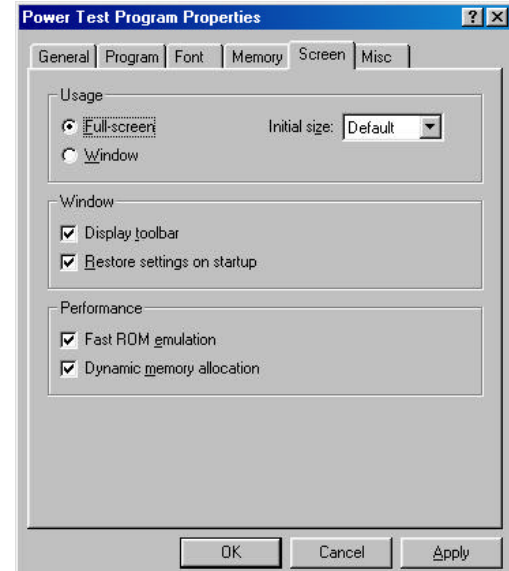


5. Click on the **MEMORY** tab.
6. Select **PROTECTED** for the conventional memory.
7. From the pull-down menu labeled **INITIAL ENVIRONMENT**, select **1024**.
8. From the pull-down menu labeled **MS-DOS Protected mode (DPMI) memory**, select **1024**.

**Note:** *Some systems are configured to use Expanded Memory. This is not necessary to run Power POS, however, if your system is configured for Expanded Memory, select the setting 1024.*



9. Click on the **SCREEN** tab.
10. Select the **FULL SCREEN** button.
11. Click on the **APPLY** button.
12. Click **OKAY**.

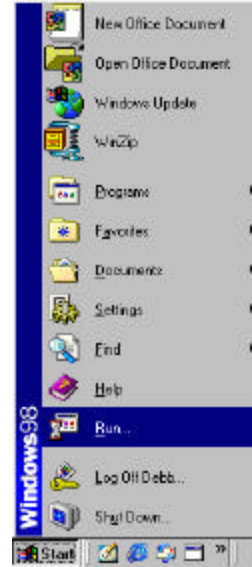
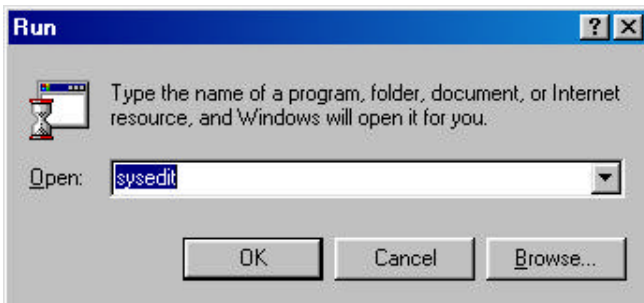


## Editing the CONFIG.SYS to set the environment for Power POS

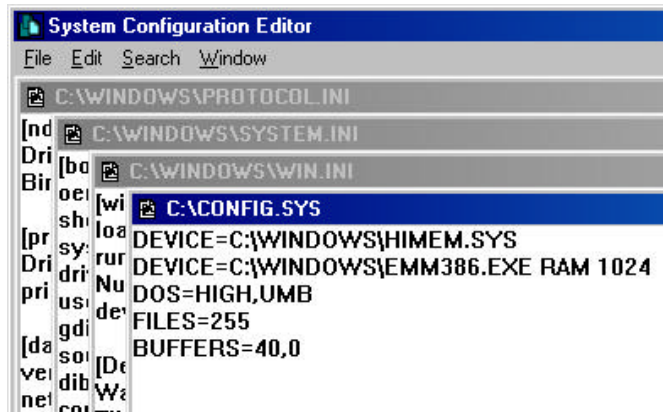
Statements need to be added to the config.sys file on all machines that will run Power POS.

### Editing the Config.sys from Windows 95/98

1. Left click on **START**, and **RUN**.
2. Type **SYSEDIT** and then press **<ENTER>**.



3. The **SYSTEM CONFIGURATION EDITOR** will open.
4. Click on the **CONFIG.SYS** window, which is the 2<sup>nd</sup> window showing.



5. Type in the following statement **EXACTLY** as shown:

```
DEVICE=C:\WINDOWS\HIMEM.SYS
DEVICE=C:\WINDOWS\EMM386.EXE RAM 1024
DOS=HIGH,UMB
FILES=255
BUFFERS=40,0
```

6. Go to **FILE** and **EXIT**. You will be prompted to save the changes.
7. Click **YES** to close the window.
8. You will need to **RESTART** your computer. Go to **START, SHUT DOWN**, and **RESTART**.

## Editing the Config.sys from DOS

1. At the **C:\>** prompt, type the following:

**EDIT CONFIG.SYS**

Then press **<ENTER>**.

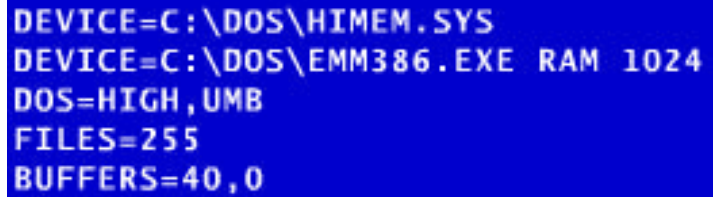


```
C:\> EDIT CONFIG.SYS
```

2. The **EDIT CONFIG.SYS** window will open.

3. Type in the following statements:

**DEVICE=C:\DOS\HIMEM.SYS  
DEVICE=C:\DOS\EMM386.EXE RAM 1024  
DOS=HIGH,UMB  
FILES=255  
BUFFERS=40,0**



```
DEVICE=C:\DOS\HIMEM.SYS  
DEVICE=C:\DOS\EMM386.EXE RAM 1024  
DOS=HIGH,UMB  
FILES=255  
BUFFERS=40,0
```

4. Press the keys **<ALT + F>**.
5. Use the arrow keys to arrow down to **EXIT** and press **<ENTER>**.
6. You will be prompted to save the changes.
7. Choose **YES** and press **<ENTER>**.



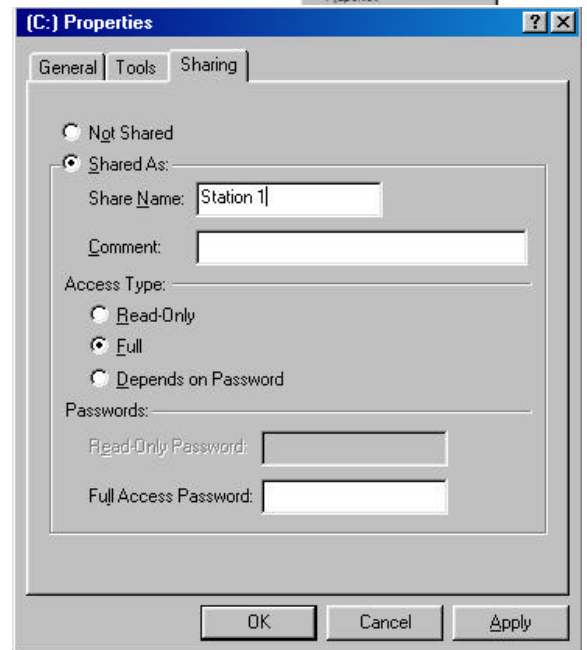
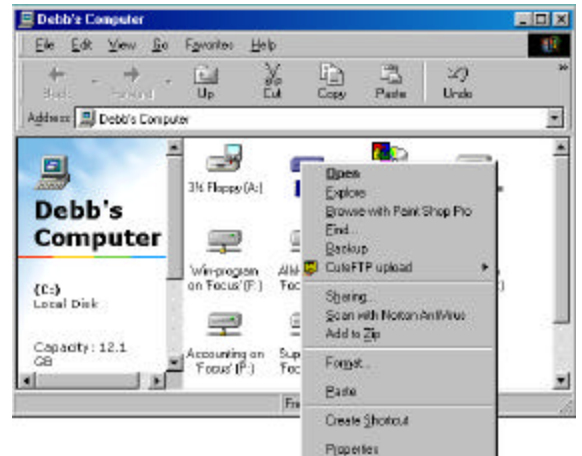
## Setting Up Power POS in Windows 95/98 Networked POS Station

### Sharing your Server or Main PC:

1. Make sure that the network is setup and configured and that all machines to use the POS software can be seen within your **NETWORK NEIGHBORHOOD**.
2. Make sure that the Power POS program is loaded on the server as indicated in the section titled:

### Power Pos Windows 95/98 Installation on Server or Stand-Alone PC – Pages 65-71.

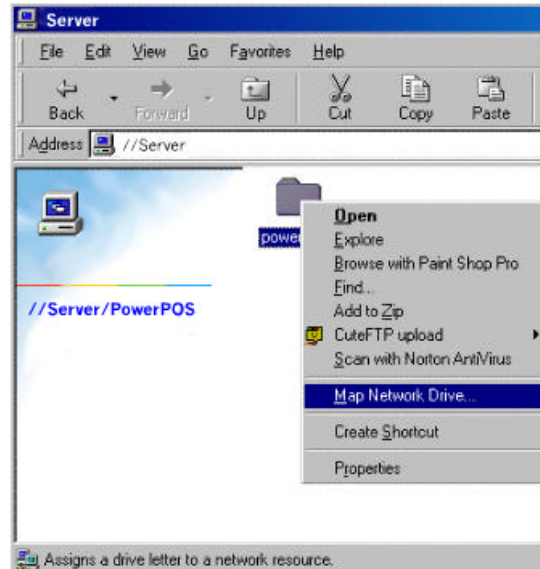
3. From the Server/Main PC, double left click on the **MY COMPUTER** icon on your windows desktop.
4. Right click on the “**C**” drive.
5. Left click on the **SHARING** option, the sharing properties window will appear.
6. Left click on the **FULL** option for the sharing type.
7. Left click on the **SHARED AS** option.
8. Type in the “shared as” name. (i.e. Station 1)
9. Left click on the **APPLY** button.
10. Left click on the **OK** button, this will take you back to the **MY COMPUTER** window.
11. Left click on the **X** in the upper right corner to close this window.



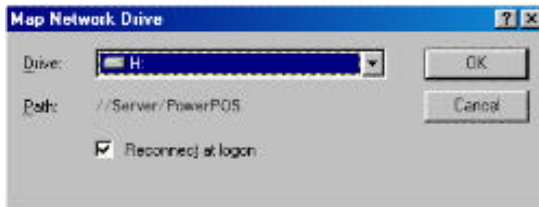
## Mapping Power POS to Individual POS Stations

To map individual work stations to Power Pos on the Server / Main PC:

1. Double left click on **NETWORK NEIGHBORHOOD**, locate the **SERVER** folder and double left click on it.
2. Locate the drive that contains the Power POS Folder.
3. Right click on the Power POS folder.
4. Select **MAP NETWORK DRIVE** option.



5. In the **DRIVE** option, choose the next available drive letter. (i.e. "H")



6. Select the **RECONNECT AT LOGON** box. Click **OK**.
7. Next you must create a Power POS program icon to run the program. **(Detailed instructions available on pages 66- 67)**
8. Next you must set up the environment for the Power POS Program. **(Detailed instructions are available on pages 68 – 69)**