

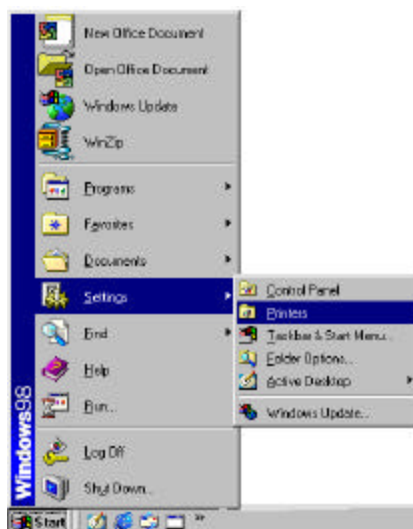
Point of Sale Hardware Installation

Parallel Printers Set-Up

Setting up a Local Parallel Printer in Windows 95/98

Left click on the **START** button.

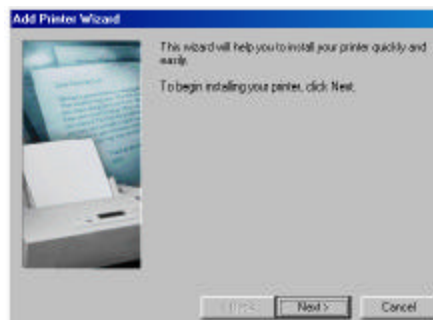
Go to **SETTINGS**, and then **PRINTERS**.



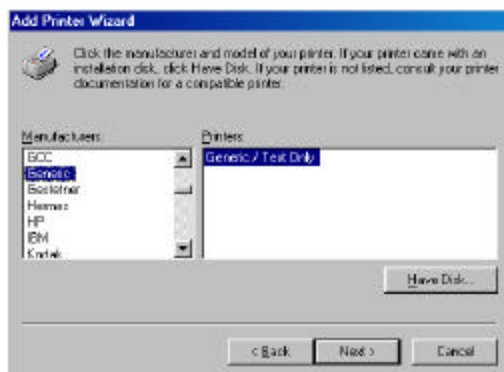
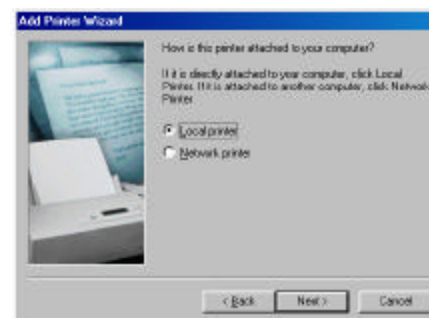
1. Locate and double left click on the **ADD PRINTER** icon.



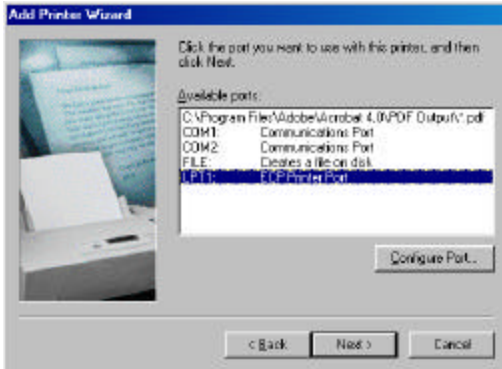
2. Click on **NEXT**.



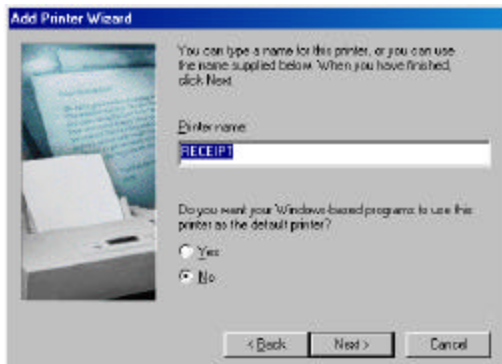
3. Select **LOCAL PRINTER**. Click on **NEXT**.



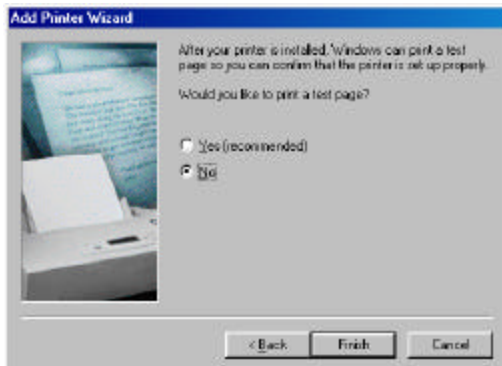
4. On the left side of the screen under **MANUFACTURERS**, scroll down and select **GENERIC**. The right side of the screen should now say **GENERIC / TEXT ONLY**. Click on the **NEXT** button.



5. Select the port that you will be connecting the printer to. The printer is usually connected to **LPT1**. Click on the **NEXT** button.



6. Type in the name of your printer. (i.e. RECEIPT or BARCODE). Click on the **NEXT** button.
7. Select **NO** option for Windows to use this printer as the default printer. Click on the **NEXT** button.



8. Select **NO** option to print a test page. Click on the **FINISH** button.
Note: You may be prompted to insert your Win95/98 disk. Make sure that you have your CD or diskettes available. Follow the instructions on the screen.

An icon should now be visible in your **PRINTERS** window.

To Set Printer Properties

1. Right click on the printer icon that you just added. (I.E. RECEIPT)
2. Left click on **PROPERTIES**.

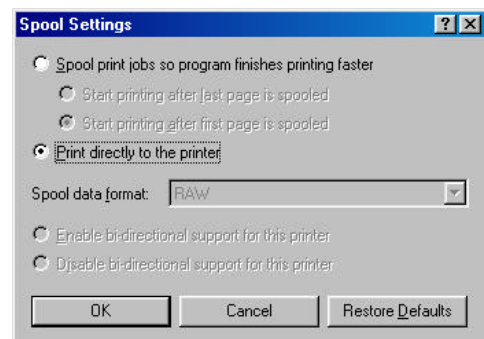


3. Left click on the **DETAILS** tab.



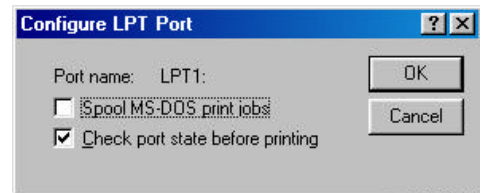
4. Left click on the **SPOOL SETTINGS** button.

5. Select **PRINT DIRECTLY TO THE PRINTER** option.
Click **OK**.



6. Left click on **PORT SETTINGS** button.

7. Make sure that the **SPOOL MS PRINT JOBS** option is disabled (no check mark in the box)
Click **OK**.
Click **APPLY**.



8. Left click on the **GENERAL** tab at the top of the **RECEIPT PRINTER PROPERTIES** window.

9. Click on the **PRINT A TEST PAGE** button at the bottom of the window.

Click **OK**.



Setting up a Local Printer in DOS

1. Physically attach printer to the port using a 25 Male to 25 Centronic parallel printer cable.
2. No printer drivers are needed.
3. To test the printer: go to **START, PROGRAMS, MS-DOS**.
4. The following prompt will appear: **C:\WINDOWS>**
At the end of this line type: **cd** and press **<ENTER>**.
5. Type in the following at the **C:** prompt:
DIR *.BAT>LPT?;, then press **<ENTER>**. (Where the ? = port # - i.e. LPT1 or LPT2, COM 1 or COM2)
6. To **EXIT DOS** screen, press **<CTRL C>**.



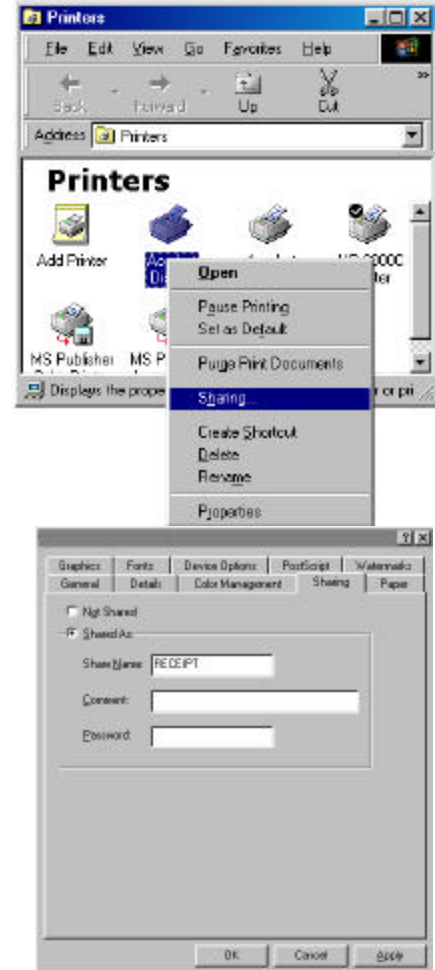
The image shows a screenshot of the MS-DOS Prompt window. The title bar reads "MS-DOS Prompt". The window contains the following text:

```
Microsoft(R) Windows 98
(C)Copyright Microsoft Corp 1981-1999.
C:\WINDOWS>cd\
C:\>DIR *.BAT>LPT
```

Setting up a Network Parallel Printer in Windows 95/98

After the network has been configured and the printer has been physically attached to the PC within the network. (as outlined in **Setting up a Local Printer in Win95/98**) the printer needs to be shared before it can be recognized within the network. The following steps are needed to share the printer on the network:

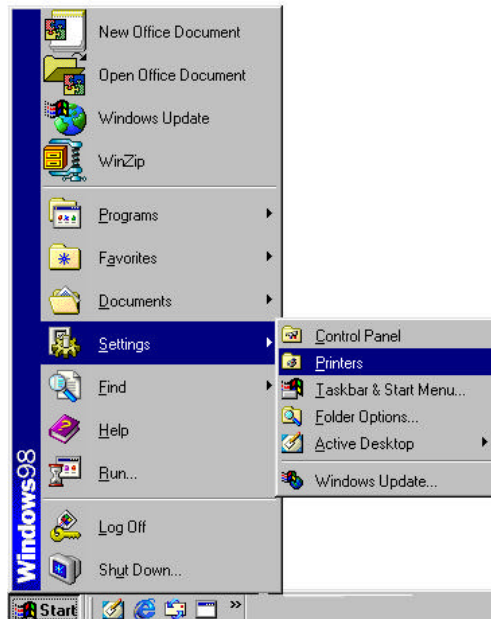
1. Go to **START, SETTINGS, and PRINTERS**.
2. Right click on the printer that you wish to share.
3. Select the **SHARING** tab.
4. Select the **SHARE AS** radio button.
5. Type in the name of the printer. (i.e. RECEIPT)
Click **APPLY**.
Click **OK**.



The printer is now able to be seen on the network.

From **each** POS station, the shared printer needs to be added.
Add the printer as follows:

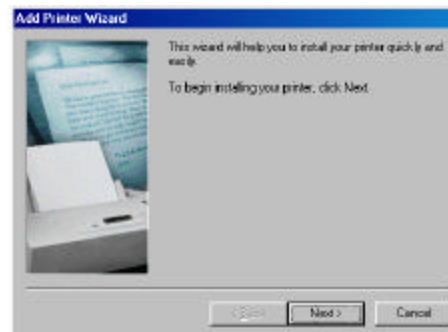
1. Go to **START, SETTINGS, and PRINTERS.**



2. Double left click on the **ADD PRINTER** icon.

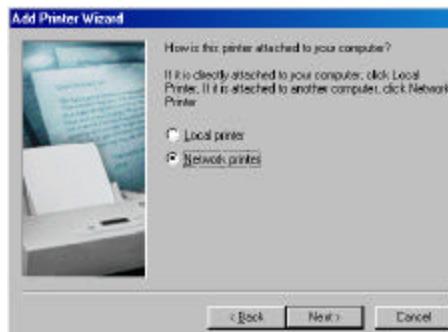


3. Click **NEXT** on the **ADD PRINTER WIZARD.**

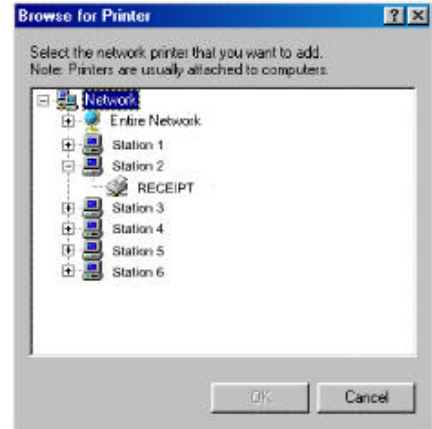


4. Choose **NETWORK PRINTER.**

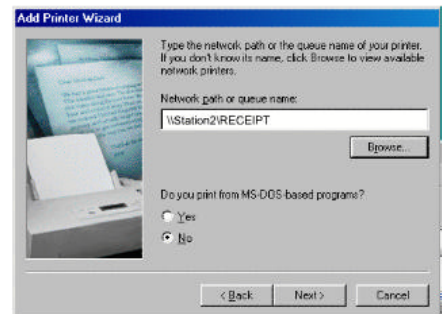
Click **NEXT.**



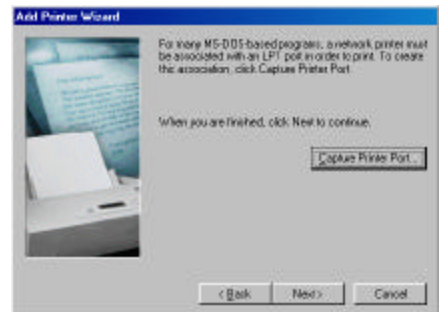
5. Left click on the **BROWSE** button and locate the computer that the printer is physically attached to within the network.
6. left click on the **PLUS** sign next to that computer, and the printer will appear. Left click on the printer to highlight, then click **OK**.



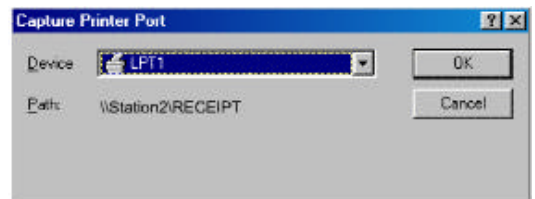
7. This will automatically bring you back to the **ADD PRINTER WIZARD** and automatically place the path to the network printer in the path box.
8. Select **YES** for printing to MS-DOS programs. Click **NEXT**.



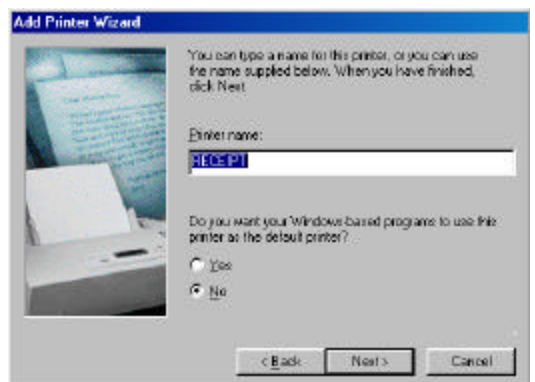
9. Left click on the **CAPTURE PRINTER PORT** button and the next available port will appear in a new window.



10. Choose your port and click on the **OK** button. Click **NEXT**.

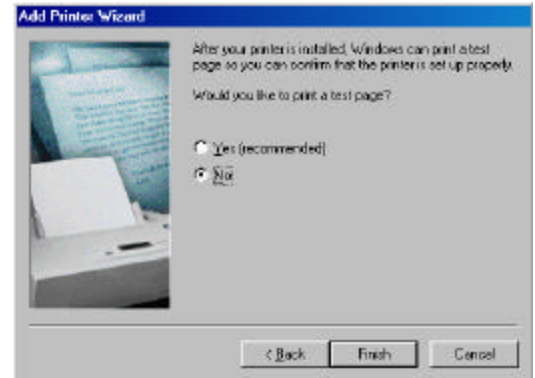


11. Type in the name of your printer. (i.e. RECEIPT)
12. Left click on the **NO** option to use this printer as the default printer in Windows. Click **NEXT**.



13. Choose **NO** for the printer test page option.
Click **FINISH**.

Note: You may be prompted to insert your Windows 95/98 disk. Make sure you have the program available. Follow the instructions on the screen.



An icon for the networked printer should appear in the **PRINTERS** folder.

14. Right click on the printer icon that you just added. (i.e. RECEIPT)

15. Left-click on **PROPERTIES**.



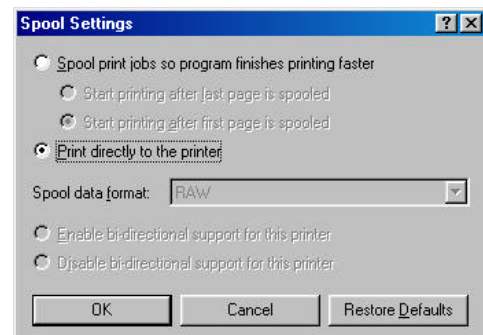
16. Left click on the **DETAILS** tab.



17. Left click on **SPOOL SETTINGS** button.

18. Select **PRINT DIRECTLY TO THE PRINTER** option is enabled.

Click **OK**.
Click **APPLY**.



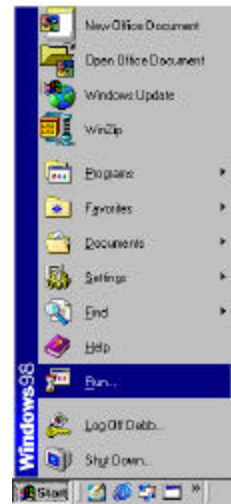
19. Left click on the **GENERAL** button tab.

20. Choose to print a test page by left clicking on the **PRINT TEST PAGE** button at the bottom of this screen.

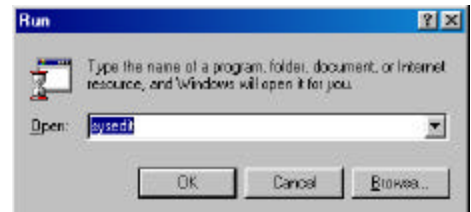
Click **OK**.



21. Go to **START, RUN**.



22. Type in **SYSEDIT**, <ENTER>.

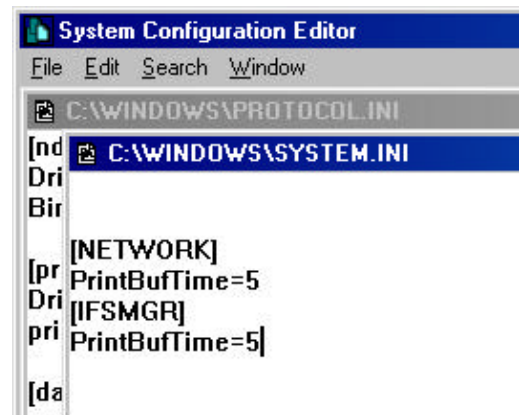


23. Select the **SYSTEM.INI** file and scroll down to make sure that the following statement is present:

```
[NETWORK]
PrintBufTime=5
[IFSMGR]
PrintBufTime=5
```

If the statement is not present, add it.

24. Click on the **X** to close the **SYSEDIT** window. You will be prompted to save changes. Click **YES**.



You must repeat this entire process for each station on the network that needs to use that printer.

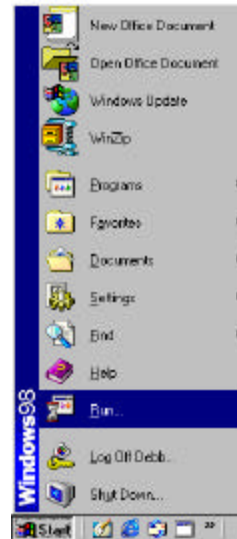
Serial Printers Set-up

Setting up a Local Serial Printer in Windows 95/98

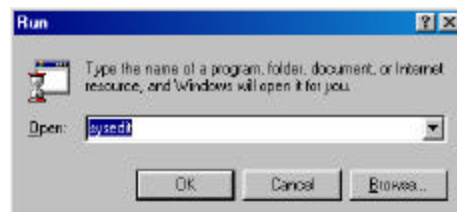
16. Physically attach the printer to the **COM** port on the PC, making note as to which port you are attaching to.

Note: *In General most serial printers will work with a null mode cable. If not, refer to the printer manual for specific pinouts for your printer's cabling needs.*

2. Go to **START, RUN.**



3. Type in **SYSEDIT**.
Click **OK**.

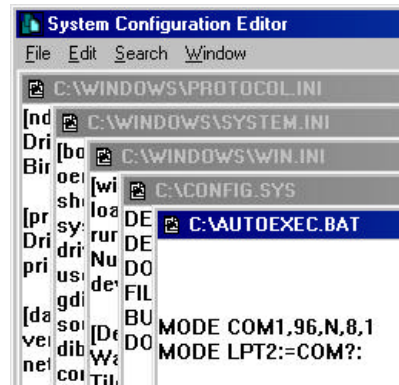


4. The **SYSTEM CONFIGURATION EDITOR** window will open.

Go to the **AUTOEXEC.BAT** window, and type in the following statements:

**MODE COM?,96,N,8,1,
MODE LPT2:=COM?:**

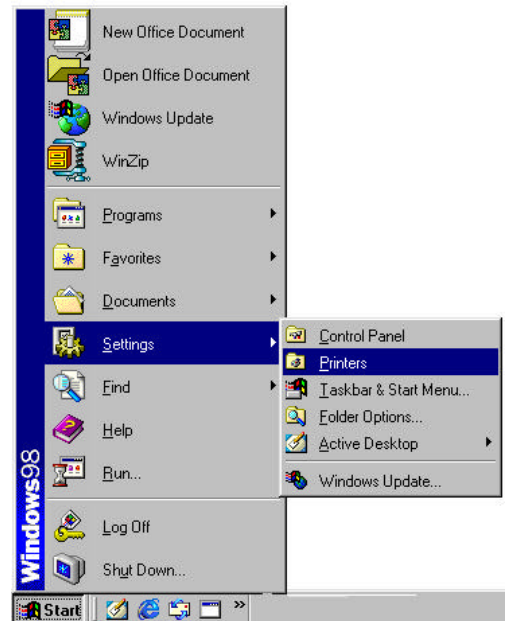
then press **<ENTER>**.
(Where the ? represents the COM port number your printer is attached)



5. Go to **FILE, and EXIT**.
When prompted to save changes, click on **YES**.

6. You will need to **RESTART** the computer for these changes to take affect.

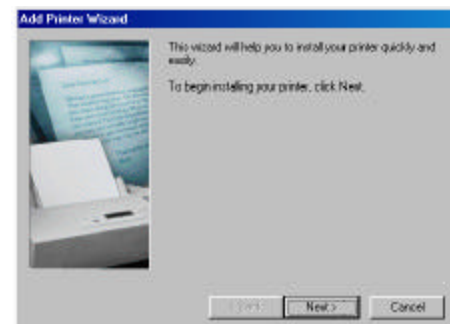
7. After restarting the computer:
Go to **START**, **SETTINGS**, and **PRINTERS**.



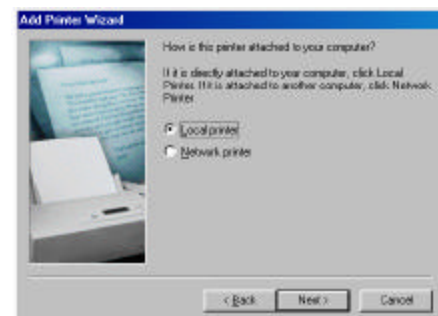
8. Double left click on the **ADD PRINTER** icon.



9. Click on **NEXT**.

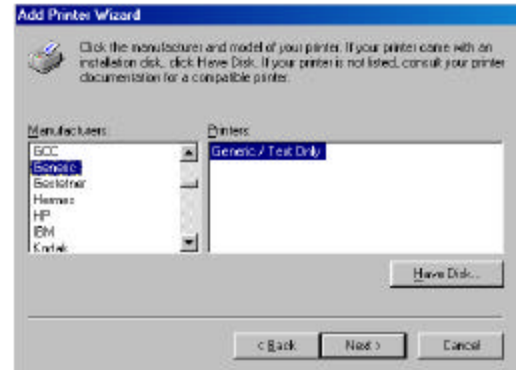


10. Select **LOCAL PRINTER**. Click on **NEXT**.



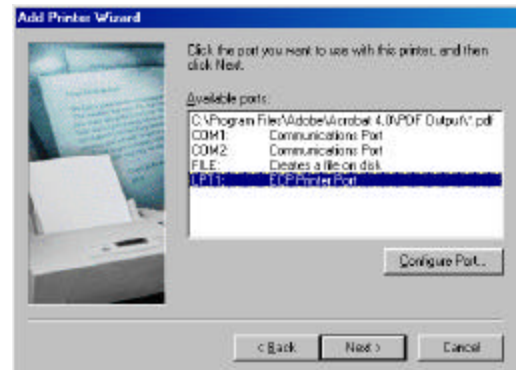
11. On the left side of the screen under **MANUFACTURERS**, scroll down and select **GENERIC**. The right side of the screen should say **GENERIC / TEXT ONLY**.

Click on **NEXT**.



12. Select the port that you will be connecting the printer to. (COM1 or COM2)

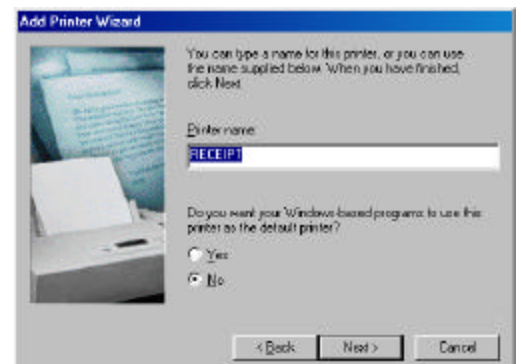
Click on **NEXT**.



13. Type in the name of your printer (i.e. Receipt)

14. Select **NO** option for Windows to use this printer as the default printer.

Click on **NEXT**.

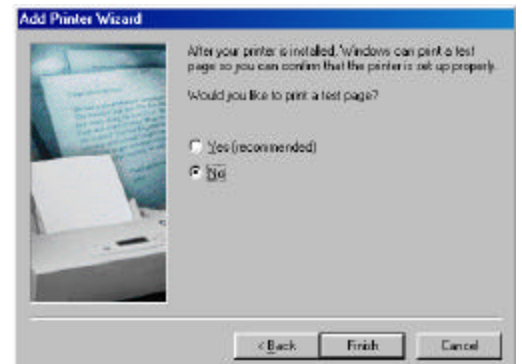


15. Select **NO** to the print a test page option.

Click on the **FINISH** button.

Note: You may be prompted to insert your Win95/98 disk. Make sure that you have the program readily available. Follow the instructions on the screen.

16. An icon should now be visible in your **PRINTERS** window.



17. Right click on the printer icon that you just added.
(i.e. Receipt Printer)

18. Left click on **PROPERTIES**.



19. Left click on **DETAILS** tabs.

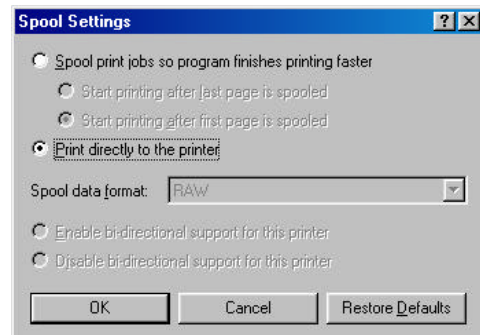
20. Left click on the **SPOOL SETTINGS** button.



21. Select **PRINT DIRECTLY TO THE PRINTER** option is enabled.

Click **OK**.

Click **APPLY**.



22. Left click on the **GENERAL** button tab.

23. Choose to print a test page by left clicking on the **PRINT TEST PAGE** tab at the bottom of this screen.

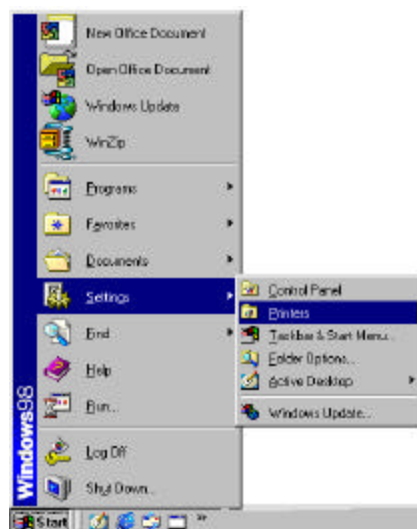
Click **OK**.



Setting up a Networked Serial Printer in Windows 95/98

After the network has been configured and the printer has been physically attached to the PC within the network, the printer needs to be shared before it can be recognized within the network. The following steps are needed to share the printer on the network.

1. Go to **START, SETTINGS, and PRINTERS.**



2. Right click on the printer you wish to share.

3. Select **SHARING.**

4. Select the **SHARE AS** button.

5. Type in the name of the printer (i.e. RECEIPT)

Click **APPLY.**

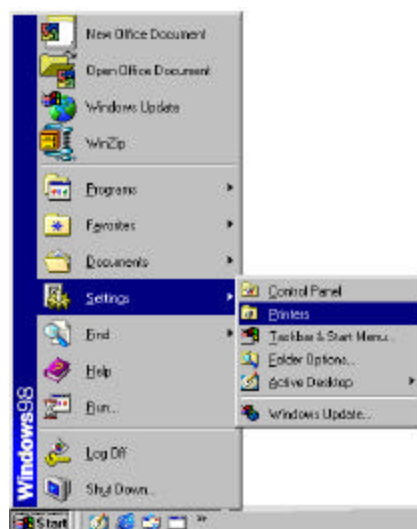
Click **OK.**

The printer is now able to be seen on the network.



On *each* individual POS station, the shared printer needs to be added. Add the printer as follows:

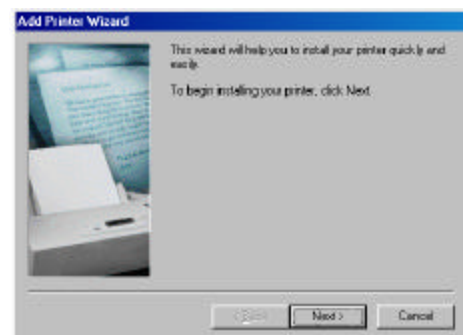
1. Go to **START, SETTINGS, and PRINTERS.**



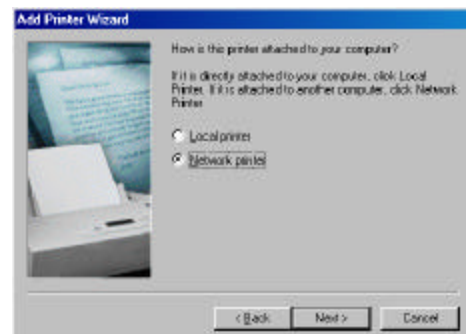
2. Double left click on the **ADD PRINTER** icon.



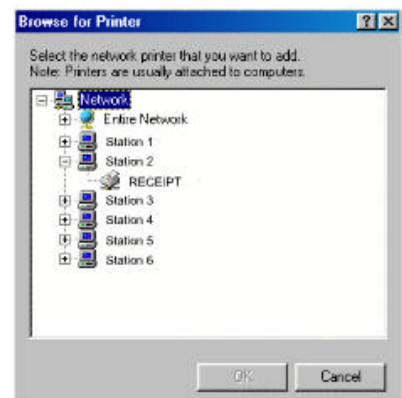
3. Click **NEXT** on the **ADD PRINTER WIZARD**.



4. Choose **NETWORK PRINTER**.
Click **NEXT**.



5. Left click on the **BROWSE** button and locate the computer that the printer is physically attached to within the network.
6. Left click on the **PLUS** sign next to that computer, and the printer will appear. Left click on the printer to highlight, then click **OK**.



7. This will automatically bring you back to the **ADD PRINTER WIZARD** and automatically place the path to the network printer in the path box.

8. Select **YES** for printing to MS-DOS Programs.

Click **NEXT**.

9. Left click on the **CAPTURE PRINTER PORT** button and the next available port will appear in a new window.

10. Choose your port and left click on the **OK** button.

Click **NEXT**.

11. Type in the name of your printer. (i.e. Receipt)

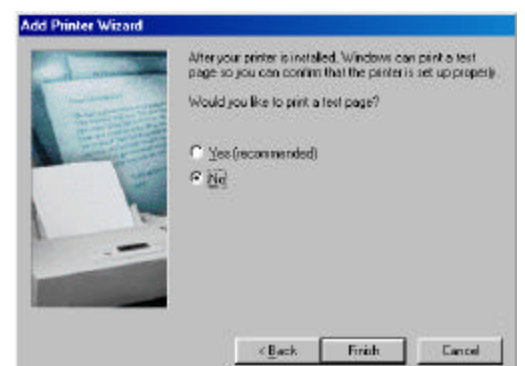
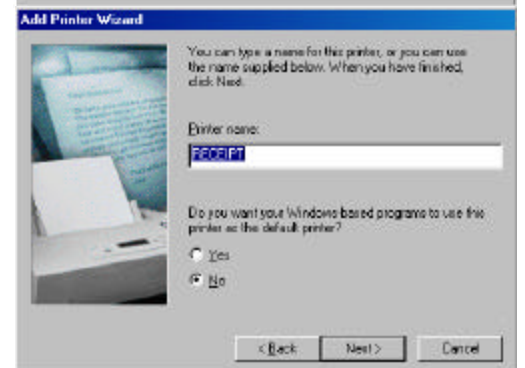
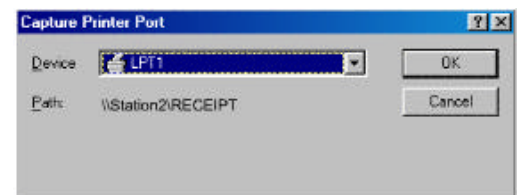
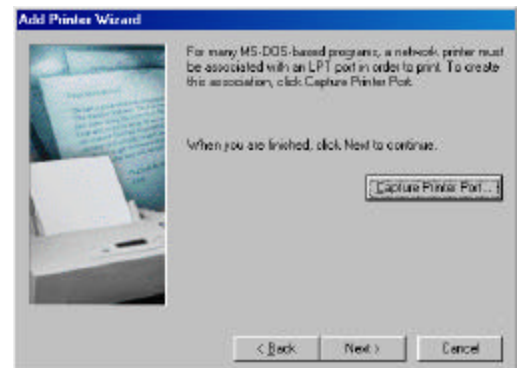
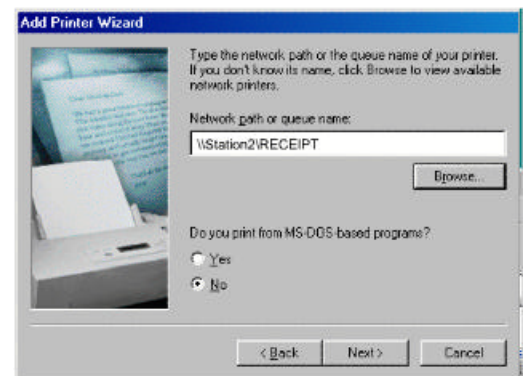
12. Left click on the **NO** option to use this printer as the Windows default printer.

Click **NEXT**.

13. Choose **NO** for the printer test page option.

Click **FINISH**.

Note: You may be prompted to insert your Win95/98 disk. Make sure you have the program available. Follow the instructions on the screen.



An icon for the networked printer should appear in the **PRINTERS** folder.

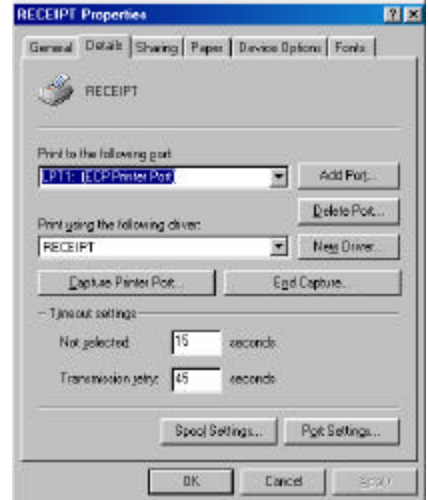


14. Right click on the printer icon that you have just added. (i.e. RECEIPT)



15. Left click on **PROPERTIES**.

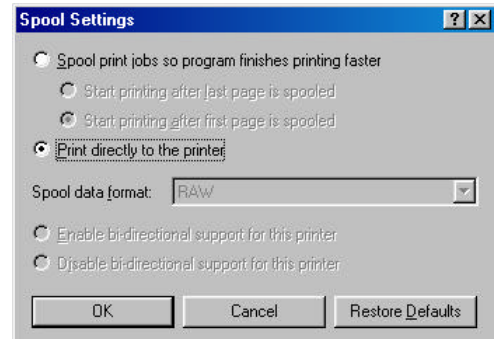
16. Left click on the **DETAILS** tab.



17. Left click on the **SPOOL SETTINGS** button.

18. Select **PRINT DIRECTLY TO THE PRINTER** option is enabled.

Click **OK**.

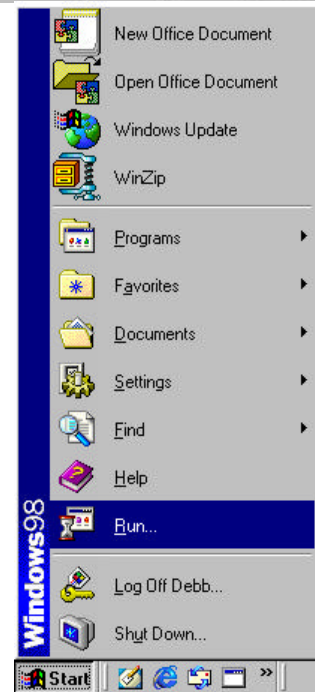


- 19. Left click on the **GENERAL** button tab.
- 20. Choose to print a test page by left clicking on the **PRINT TEST PAGE** tab at the bottom of this screen.

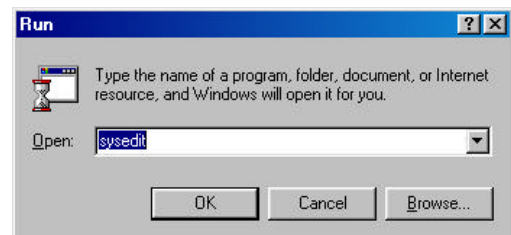
Click **OK**.



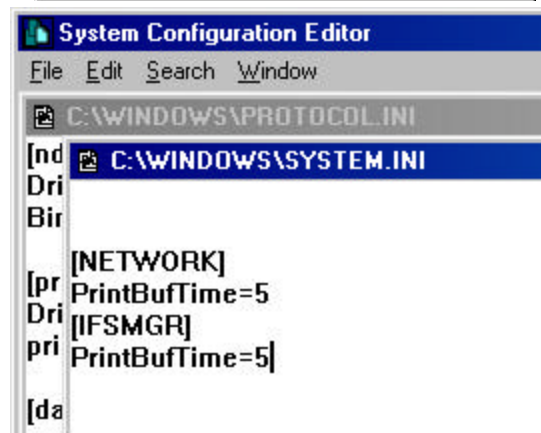
- 21. Go to **START, RUN**.



- 22. Type in **SYSEDIT**, <ENTER>.



- 23. Select the **SYSTEM.INI** file and scroll down to make sure that the following statement is present:
[NETWORK]
PrintBufTime=5
[IFSMGR]
PrintBufTime=5
 If the statement is not present, add it.



24. Click on the **X** to close the **SYSEEDIT** window.
You will be prompted to save changes.
Click **YES**.

Barcode Printers

Barcode Printers Set-Up

In general, Barcode Printers are usually attached to LPT2 and set-up the same way that you would set-up a receipt printer. See pages _____

Note: *Barcode printers will not print a test page unless the printer is in **DUMP MODE**. To put a barcode printer in **DUMP MODE** you must hold down the **PAPER FEED BUTTON** while powering on the printer. Once the printer is in dump mode, you will be able to print a test page.*

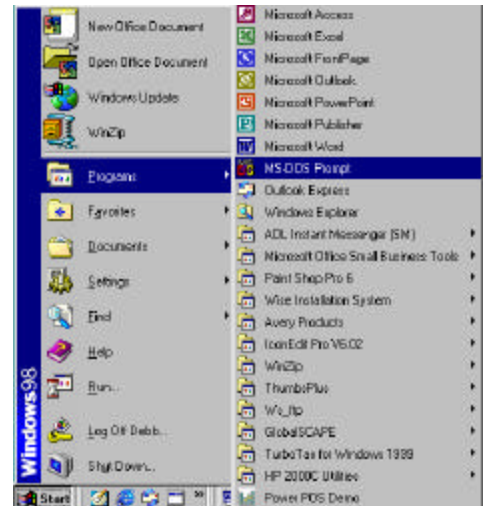
Cash Drawers

Cash Drawer / Printer Interface with an EPSON Printer

1. Remove the [6] Phillips head screws from the back of your cash drawer to reveal the female DIN connector. Attach the male DIN connection to the back of the cash drawer and replace the cover plate.

Note: Some cash drawers will come with the DIN connection pre-wired. In that case, disregard Step #1 and proceed to Step #2.

2. Connect the other end of the cable (RJ Connection) to your receipt printer.
3. Go to **START, PROGRAMS, MS-DOS PROMPT.**



4. From the **DOS PROMPT C:\WINDOWS**, enter the following statement:

CD\POWER

Then press **<ENTER>**.

5. From the **C:\POWER** prompt, type in the following statement:

EDIT EPSON.BAT

Then press **<ENTER>**.

6. With the **<CAPSLOCK>** key on, hold down the **<CTRL>** key and the **<P>** key. Then press **<ESC>**.

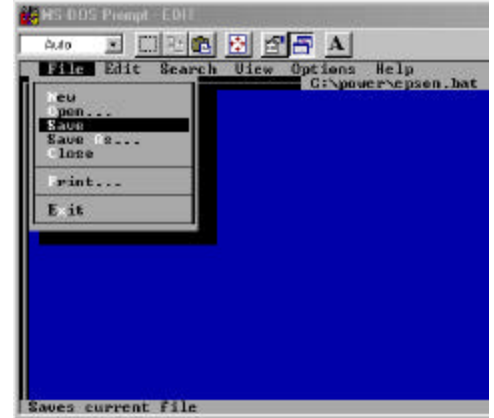
You will see an arrow pointing left on the screen.

7. Next type in a lower case **p0**.

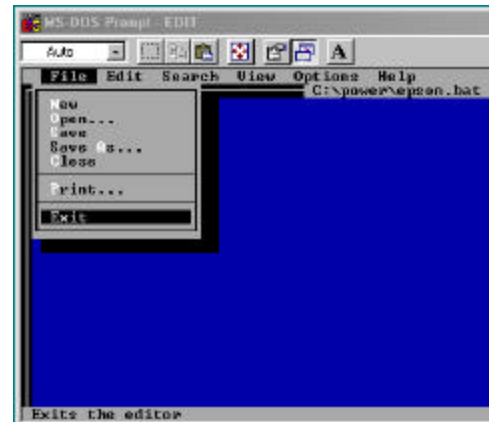
8. Hold down the **<ALT>** key and type **150**, release the **<ALT>** key. Repeat. This will add the following two characters to the screen: **ûû**.



9. Go to **FILE**, arrow down to **SAVE**, press **<ENTER>**.



10. Go to **FILE**, arrow down to **EXIT**, press **<ENTER>**.



11. Back at the **MS-DOS PROMPT** , type in the following statement:

COPY CON OPEN.BAT

Then press **<ENTER>**.

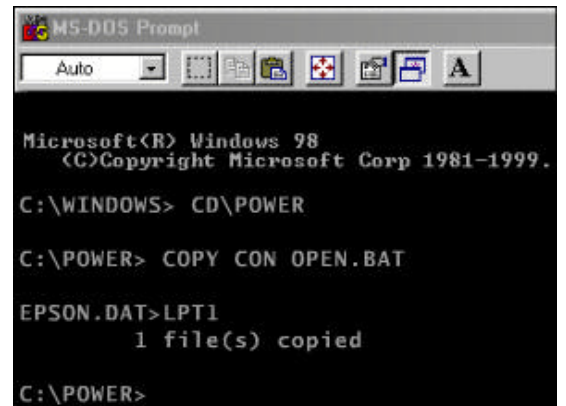
12. Then type the following:

EPSON.DAT>LPT?

(Where ?= the port number the printer is physically attached to)

Then press **<F6>** , and **<ENTER>**.

Now type in the word **OPEN** and press **<ENTER>** to open the cash drawer.

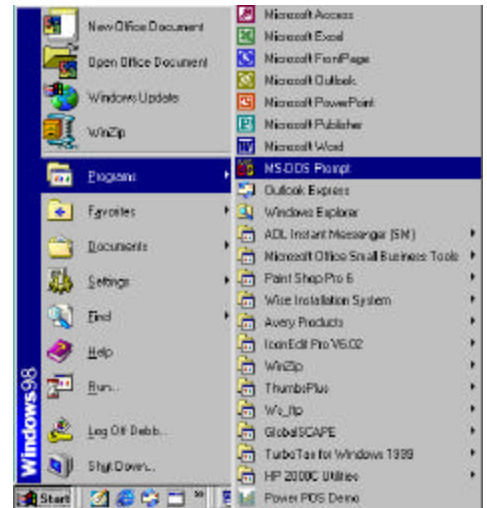


Cash Drawer / Printer Interface (all other printers)

1. Remove the [6] Phillips head screws from the back of your cash drawer to reveal the female DIN connector. Attach the male DIN connection to the back of the cash drawer and replace the cover plate.

Note: Some cash drawers will come with the DIN connection pre-wired. In that case, disregard Step #1 and proceed to Step #2.

2. Connect the other end of the cable (RJ Connection) to your receipt printer.
3. Go to **START, PROGRAMS, MS-DOS PROMPT.**



4. From the **DOS PROMPT C:\WINDOWS**, enter the following statement:

CD\POWER

Then press **<ENTER>**.

5. From the **C:\POWER** prompt, type in the following statement:

COPY CON BELL

Then press **<ENTER>**. Choose **Y-Yes** to overwrite bell.

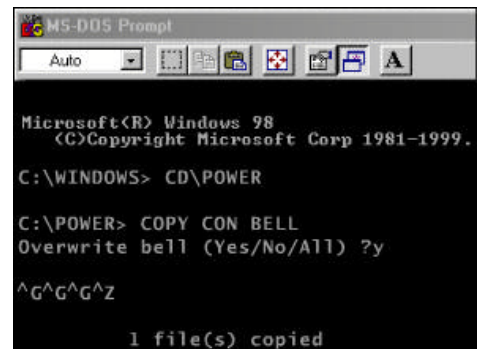
6. Hold down the **<CTRL>** key and type the following:

GGG

(**^^^G^^** will appear on the screen)

Press the **<F6>** and **<ENTER>**.

You should see that one file has been copied.



7. Next type the following:

COPY CON OPEN.BAT

Then press **<ENTER>**.

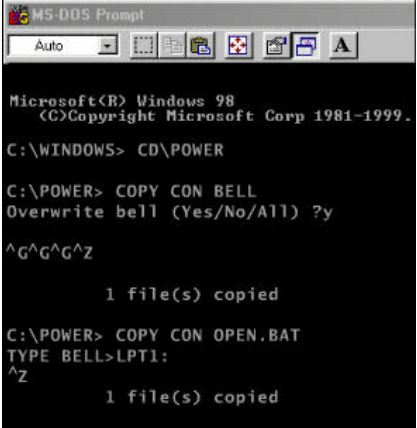
8. Then type the following statement:

TYPE BELL>LPT?: or **TYPE BELL>COM?:**

(Where ?= whatever port the printer is physically attached to)

Press **<F6>**, then **<ENTER>**.

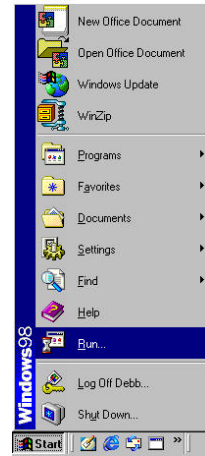
Now type in the word **OPEN** and press **<ENTER>** to open the cash drawer.



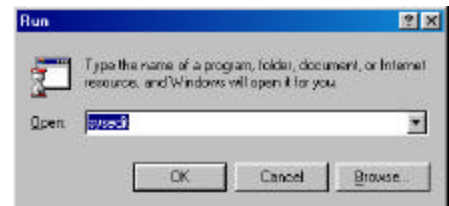
```
MS-DOS Prompt
Auto
Microsoft(R) Windows 98
(C)Copyright Microsoft Corp 1981-1999.
C:\WINDOWS> CD\POWER
C:\POWER> COPY CON BELL
Overwrite bell (Yes/No/All) ?y
^G^G^G^Z
1 file(s) copied
C:\POWER> COPY CON OPEN.BAT
TYPE BELL>LPT1:
^Z
1 file(s) copied
```

Cash Drawer /Serial Interface

1. Physically attach cash drawer to a **COM PORT**.
2. Go to **START**, and **RUN**.



3. Type in **SYSEDIT**, then press **<ENTER>**.

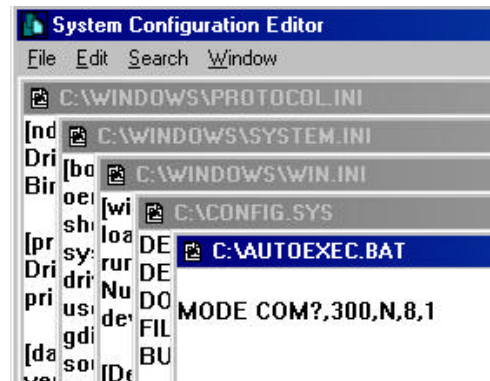


4. The **SYSTEM CONFIGURATION EDITOR** window will open.
5. Go to the **AUTOEXEC.BAT** window and type in the following statement:

MODE COM?,300,N,8,1

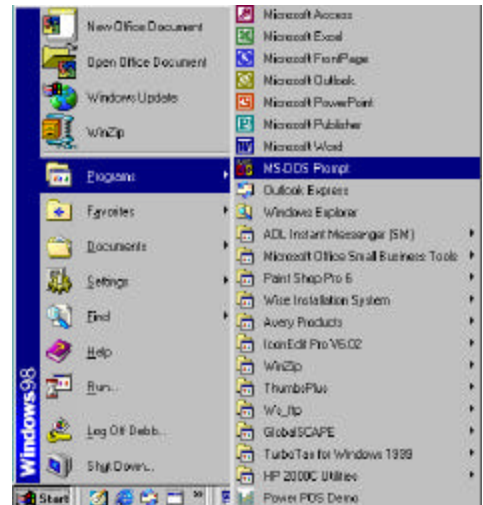
(Where ? is the COM port number that your cash drawer is connected to ie. 1,2,3 or 4)

6. Go to **FILE**, and **EXIT**.
When prompted to save changes, click **YES**.



At this point you will need to **RESTART** your computer.
To do this, click on **START**, **SHUT DOWN**, and **RESTART**.

7. Go to **START, PROGRAMS, and MS-DOS PROMPT.**



8. From the **DOS PROMPT C:\WINDOWS,** enter the following statement:

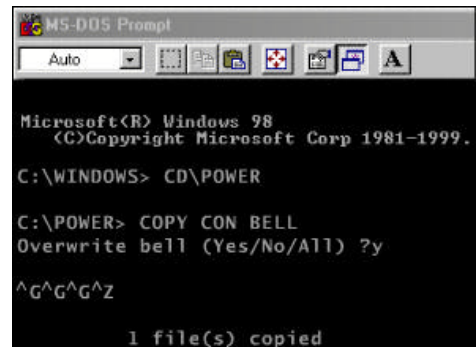
CD\POWER

Then press **<ENTER>**.

9. From the **C:\POWER** prompt, type in the following statement:

COPY CON BELL

Then press **<ENTER>**. Choose **Y-Yes** to overwrite bell.



10. Hold down the **<CTRL>** key and type the following:

GGG

(**^G^G^G** will appear on the screen)

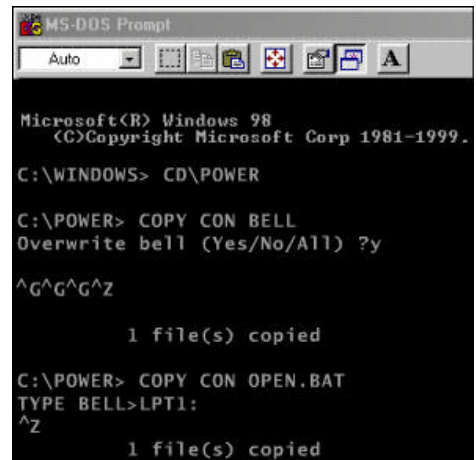
Press the **<F6>** and **<ENTER>**.

You should see that one file has been copied.

11. Next type the following:

COPY CON OPEN.BAT

Then press **<ENTER>**.



12. Then type the following statement:

TYPE BELL>LPT?: or **TYPE BELL>COM?:**

(Where ?= whatever port the printer is physically attached to)

Press **<F6>**, then **<ENTER>**.

You should see that one file has been copied.

Now type in the word **OPEN** and press **<ENTER>** to open the cash drawer.

Pole Displays

Pole Displays

Pole displays come with a **Y-CABLE** and a **POWER SUPPLY**. One end of the cable is a **FEMALE DIN CONNECTOR** that connects directly to the **POLE DISPLAY**. The other end of the cable is either a **FEMALE 25-PIN** (serial connection) or **MALE 25-PIN** (parallel connection). Attach the pole display to a **COM** port or a **PARALLEL** port, making note as to which port you are connecting the pole display to. Attach the remaining end of the **Y-CABLE** to the **POWER SUPPLY**.

Note: If only **9-PIN** ports are available on the PC and the pole display is a **25-PIN** then a **DB25M/DB9F** adaptor needs to be attached to the pole display's **Y-CABLE** in order to fit the PC. Make sure that in the **PS.bat** there is the following statement: **SET PSPOLE=YES**.

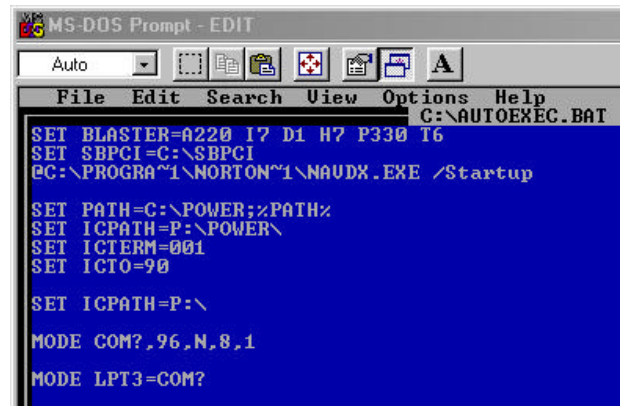
Pole Displays DOS Operation

SERIAL INTERFACE:

1. From the **DOS PROMPT, C:** type the following statement:

EDIT AUTOEXEC.BAT

Then press **<ENTER>**. This will open up the autoexec.bat file for editing.



```
MS-DOS Prompt - EDIT
Auto
File Edit Search View Options Help
C:\AUTOEXEC.BAT
SET BLASTER=A220 I7 D1 H7 P330 T6
SET SBPCI=C:\SBPCI
@C:\PROGRAM~1\NORTON~1\NAUDX.EXE /Startup
SET PATH=C:\POWER;XPATHX
SET ICPATH=P:\POWER\
SET ICTERM=001
SET ICTO=90
SET ICPATH=P:\
MODE COM?,96,N,8,1
MODE LPT3=COM?
```

2. Type the following statements:

MODE COM?,96,N,8,1

(Where the ? is the COM port number that your pole display is connected to: i.e. 1,2,3 or 4)

MODE LPT3:=COM?

(Where the ? is the COM port number that your pole display is connected to: i.e. 1,2,3 or 4)

3. After you have added the lines, go to **FILE**, arrow down to **SAVE**, then press **<ENTER>**.
5. **RESTART** the computer. Go to **START, SHUT DOWN**, and **RESTART**.

PARALLEL INTERFACE

1. Make note of the **PARALLEL PORT** that the pole display is attached to.

Testing the Pole Display

1. From the **MS-DOS PROMPT**, **C:**, type the following:

CD\POWER

Then press **<ENTER>**.

2. From the **C:\POWER** prompt, type the following:

COPY CON HELLO

Then press **<ENTER>**.

HELLO

Then press **<ENTER>**.

Then press **<F6>**, Then press **<ENTER>**.

One file will be copied.

3. Then type the following:


TYPE HELLO>COM?: (serial interface)

or

TYPE HELLO>LPT? (parallel interface)

(Where ? = the port the device is attached to)

The response should be "HELLO" across the screen of the pole display.



```
C:\> CD\POWER
C:\POWER> COPY CON HELLO

HELLO
^Z

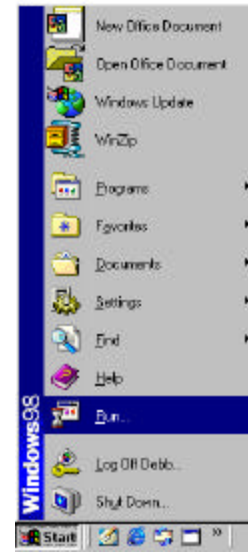
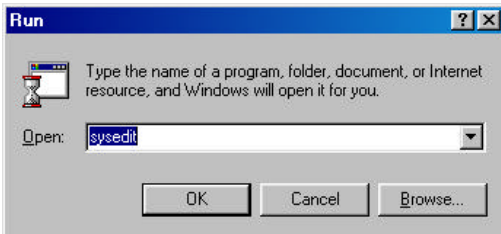
1 file(s) copied

C:\POWER> TYPE HELLO>COM?:
```

Pole Display Windows 95/98 Operating System

SERIAL INTERFACE:

1. In Windows, go to **START**, and **RUN**.
2. Type in **SYSEEDIT**, and press **<ENTER>**.



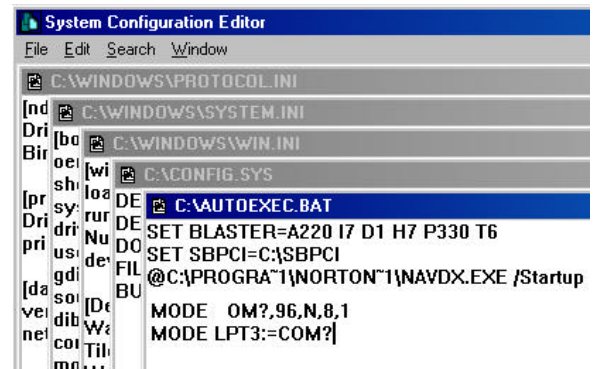
3. Left click on **OK**, this will open the system configuration editor.
4. In the **AUTOEXEC.BAT** window, type the following statement:

MODE COM?,96,N,8,1

(Where the ? is the COM port number that your pole display is connected to: i.e. 1,2,3 or 4)

MODE LPT3:=COM?

(Where the ? is the COM port number that your pole display is connected to: i.e. 1,2,3 or 4)



4. After you have added the lines, go to **FILE**, arrow down to **SAVE**, then press **<ENTER>**.
5. **RESTART** the computer. Go to **START**, **SHUT DOWN**, and **RESTART**.

PARALLEL INTERFACE:

1. Make note of the **PARALLEL PORT** that the pole display is attached to.



Testing the Pole Display

1. Go to **START, PROGRAMS, MS-DOS PROMPT.**

2. From the **MS-DOS PROMPT, C:\WINDOWS,** type the following:

CD\POWER

Then press **<ENTER>**.

3. From the **C:\POWER** prompt, type the following:

COPY CON HELLO

Then press **<ENTER>**.

HELLO

Then press **<ENTER>**.

Then press **<F6>**, Then press **<ENTER>**.

One file will be copied.

4. Then type the following:

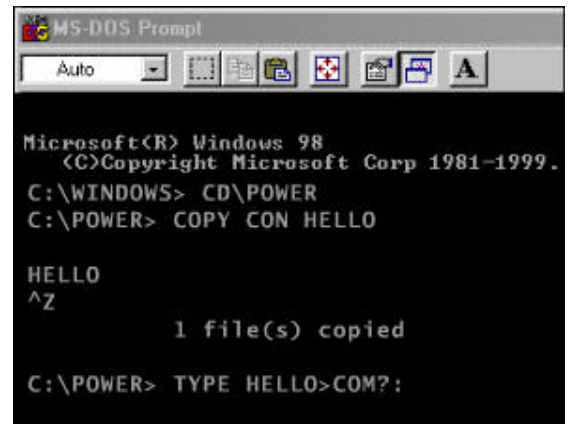
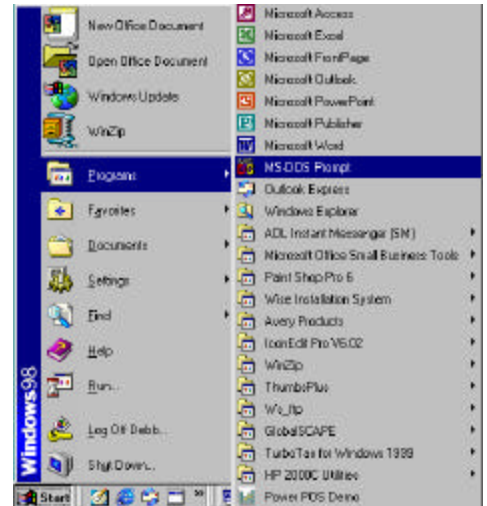
TYPE HELLO>COM?: (serial interface)

or

TYPE HELLO>LPT? (parallel interface)

(Where ? = the port the device is attached to)

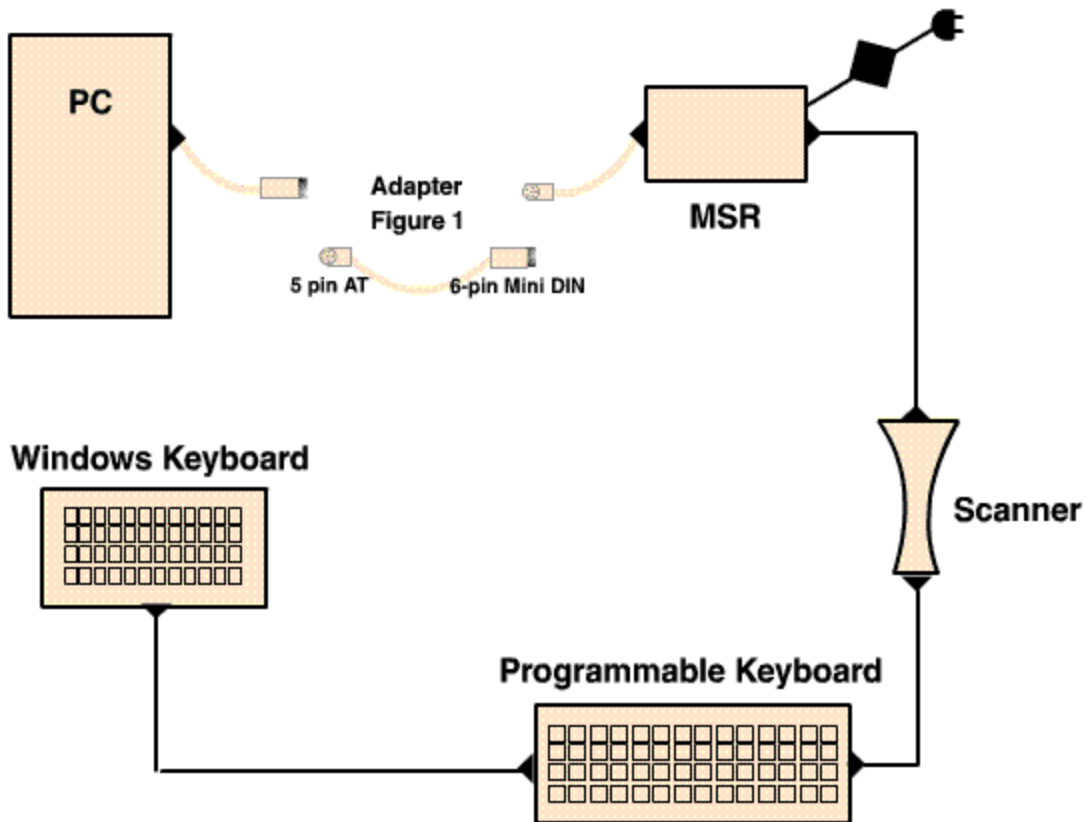
The response should be "HELLO" across the screen of the pole display.



Keywedge Devices

Keyword Devices

1. All keyboard wedge input devices such as barcode scanner, credit card / check readers; programmable keyboards and standard 112 key keyboards are connected to the PC via a **DAISY CHAIN**.
2. If the PC uses a keyboard with a **6-PIN MINI DIN CONNECTOR** (A.K.A. a PS/2 connector) and your first device into the PC is a **5-PIN DIN CONNECTOR** (A.K.A. an AT connector), then you will need to use an adapter cable to make the connection. **See diagram below.**
3. Some check / credit card readers will require more power that a PC allows. In this instance a power adapter needs to be used to give the device the additional power that it requires.
4. Barcode Scanners: All Barcode Scanners will have a cable that has a connector at each end. Both connects can be either **5-PIN DIN CONNECTOR** (A.K.A. an AT connector), or a **6-PIN MINI DIN CONNECTOR** (A.K.A. a PS/2 connector). The male ended cable plugs into the PC or credit card/check reader. You may need an adapter (see diagram below) to make the connection between the devices. The female end can be connected to a keyboard. Again, keep in mind that you may need an adapter to make the connection.
5. Programmable keyboards com with both **5-PIN DIN CONNECTOR** (A.K.A. an AT connector) and **6-PIN MINI DIN CONNECTIONS** (A.K.A. a PS/2 connector).



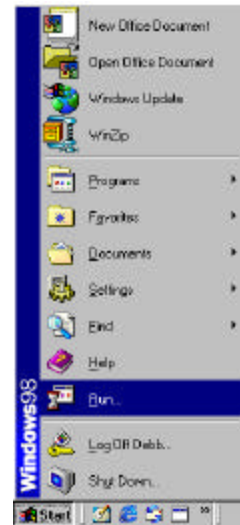
Power POS Software Installation

Setting Up Power POS in Windows 95/98

Power Pos Windows 95/98 Installation on Server or Stand-Alone PC

Load the program onto the machine that will be the **SERVER** or the **STAND ALONE PC**.

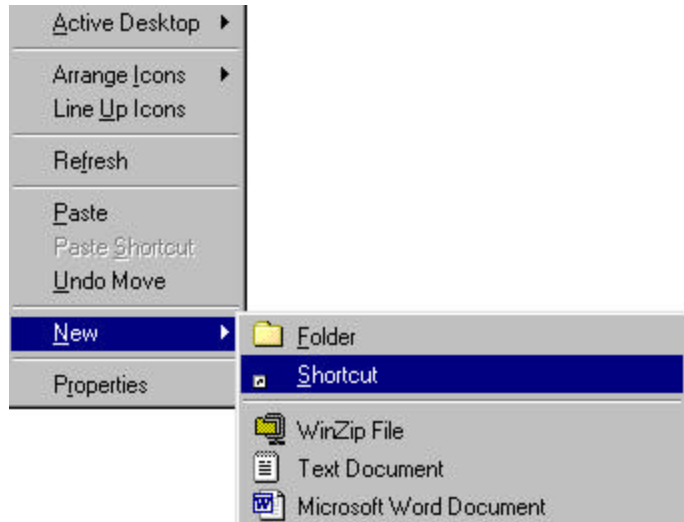
1. Left click on **START**, and **RUN**.
2. Type **A:\INSTALL** (with diskette #1 in the floppy drive) and the press **<ENTER>**.



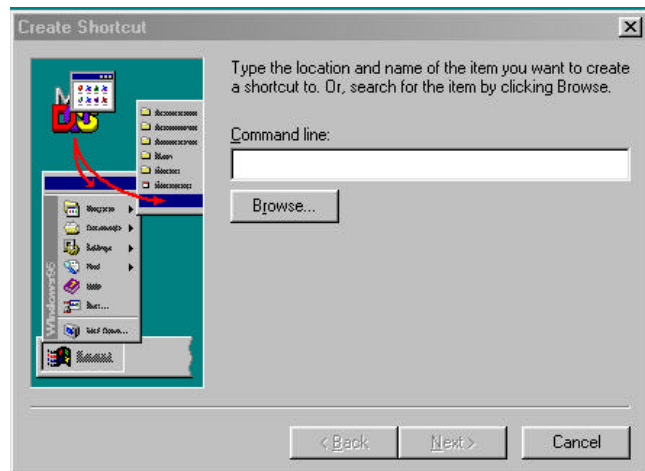
3. Follow the install instructions, selecting the desired directory (this is usually C:\Power)
4. Insert install disk #2 when prompted to do so.
5. When the installation is complete you will be prompted to **RESTART** your computer. Go to **START, SHUT DOWN** and **RESTART**.

Create an icon on your desktop to run Power POS

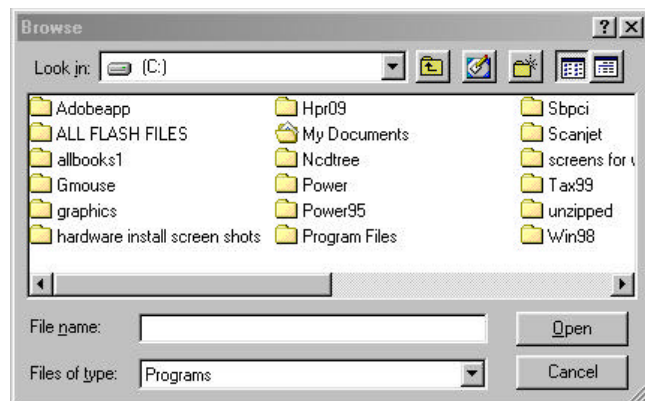
1. Right click on your desktop (make sure you choose a place that is free of any other program icons).
2. Select **NEW**.
3. Select **SHORTCUT**.



4. Left click on the **BROWSE** button.

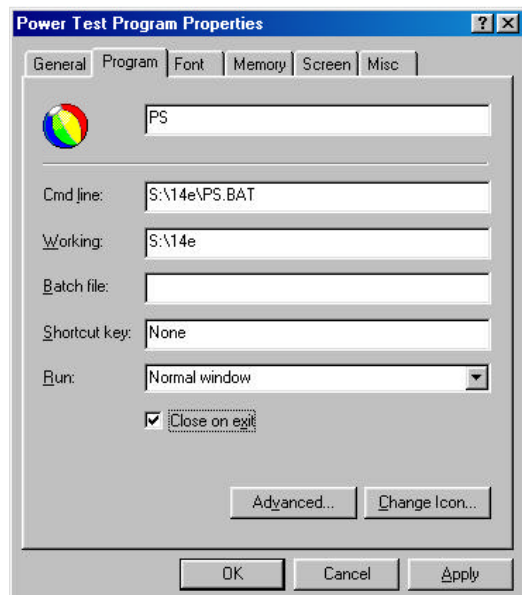
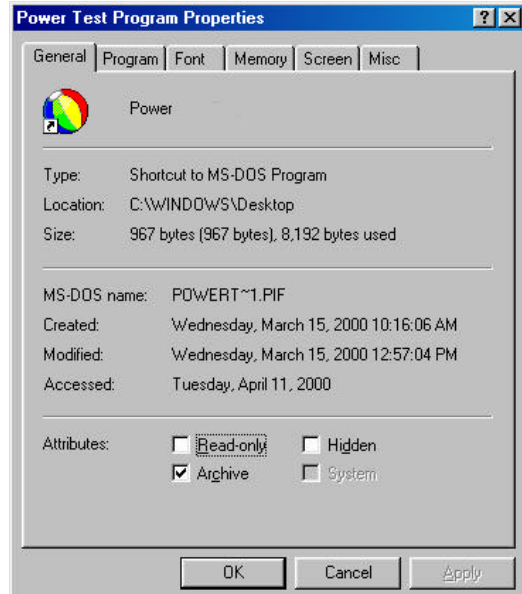


5. Browse the C-drive to locate the **POWER** folder:



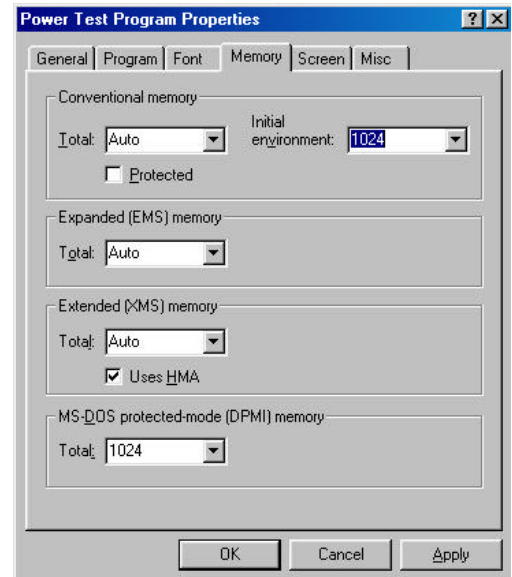
Setting up the environment for the Power POS Program to run:

1. Right click on the **POWER POS** icon on your desktop.
2. Left click on **PROPERTIES**.
3. Click on the **PROGRAM** tab.
4. Select **CLOSE ON EXIT** (located near the bottom of this window).

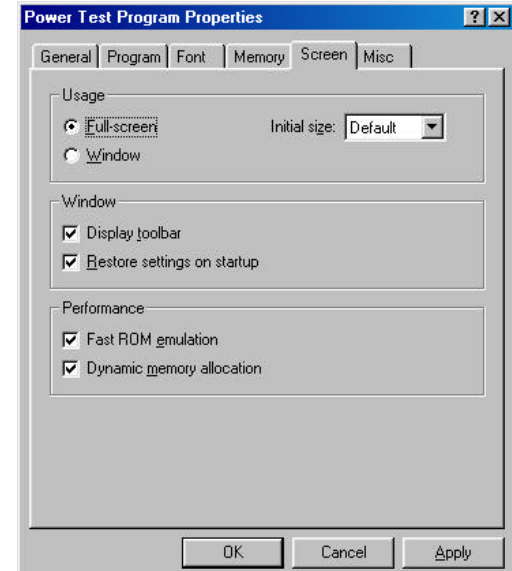


5. Click on the **MEMORY** tab.
6. Select **PROTECTED** for the conventional memory.
7. From the pull-down menu labeled **INITIAL ENVIRONMENT**, select **1024**.
8. From the pull-down menu labeled **MS-DOS Protected mode (DPMI) memory**, select **1024**.

Note: Some systems are configured to use Expanded Memory. This is not necessary to run Power POS, however, if your system is configured for Expanded Memory, select the setting 1024.



9. Click on the **SCREEN** tab.
10. Select the **FULL SCREEN** button.
11. Click on the **APPLY** button.
12. Click **OKAY**.

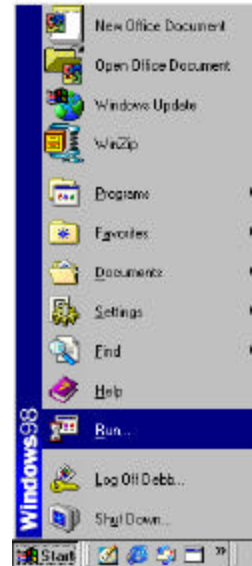


Editing the CONFIG.SYS to set the environment for Power POS

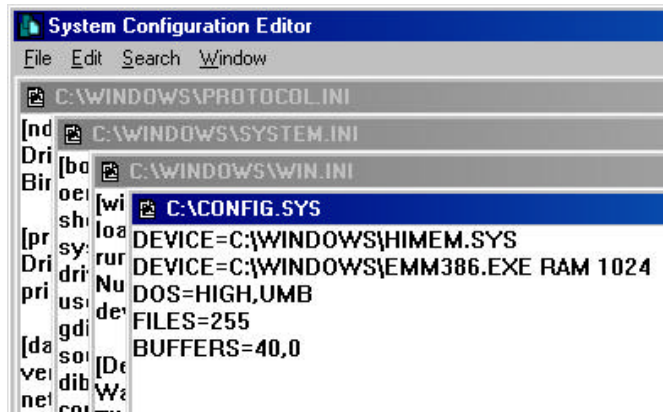
Statements need to be added to the config.sys file on all machines that will run Power POS.

Editing the Config.sys from Windows 95/98

1. Left click on **START**, and **RUN**.
2. Type **SYSEDIT** and then press **<ENTER>**.



3. The **SYSTEM CONFIGURATION EDITOR** will open.
4. Click on the **CONFIG.SYS** window, which is the 2nd window showing.



5. Type in the following statement **EXACTLY** as shown:

```
DEVICE=C:\WINDOWS\HIMEM.SYS
DEVICE=C:\WINDOWS\EMM386.EXE RAM 1024
DOS=HIGH,UMB
FILES=255
BUFFERS=40,0
```

6. Go to **FILE** and **EXIT**. You will be prompted to save the changes.
7. Click **YES** to close the window.
8. You will need to **RESTART** your computer. Go to **START, SHUT DOWN**, and **RESTART**.

Editing the Config.sys from DOS

1. At the **C:\>** prompt, type the following:

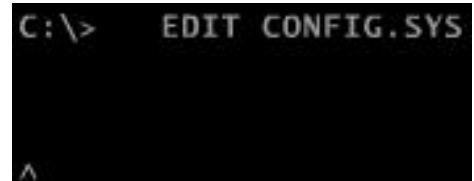
EDIT CONFIG.SYS

Then press **<ENTER>**.

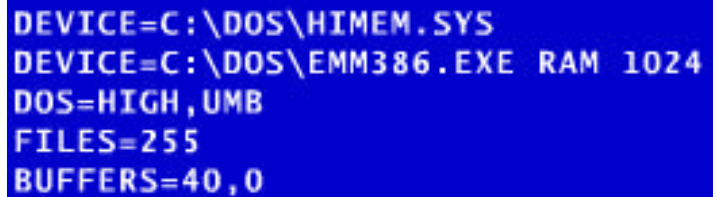
2. The **EDIT CONFIG.SYS** widow will open.

3. Type in the following statements:

**DEVICE=C:\DOS\HIMEM.SYS
DEVICE=C:\DOS\EMM386.EXE RAM 1024
DOS=HIGH,UMB
FILES=255
BUFFERS=40,0**



```
C:\> EDIT CONFIG.SYS
```



```
DEVICE=C:\DOS\HIMEM.SYS  
DEVICE=C:\DOS\EMM386.EXE RAM 1024  
DOS=HIGH,UMB  
FILES=255  
BUFFERS=40,0
```

4. Press the keys **<ALT + F>**.
5. Use the arrow keys to arrow down to **EXIT** and press **<ENTER>**.
6. You will be prompted to save the changes.
7. Choose **YES** and press **<ENTER>**.

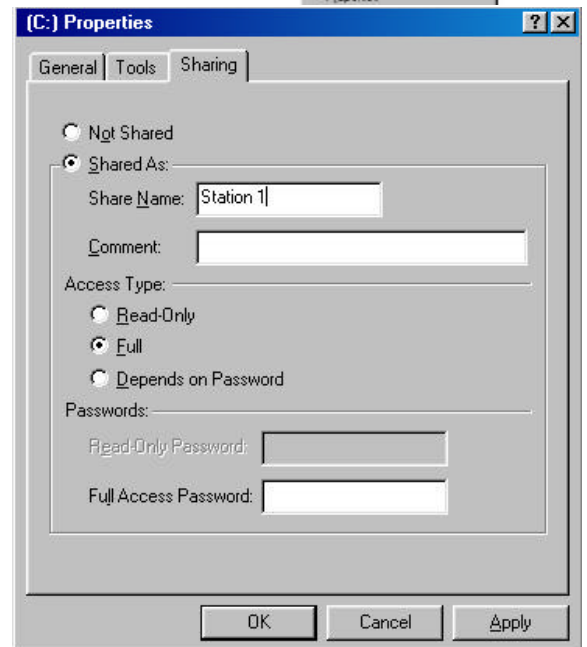
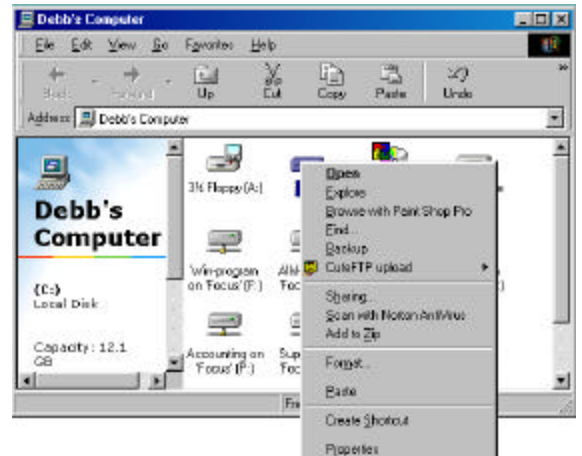
Setting Up Power POS in Windows 95/98 Networked POS Station

Sharing your Server or Main PC:

1. Make sure that the network is setup and configured and that all machines to use the POS software can be seen within your **NETWORK NEIGHBORHOOD**.
2. Make sure that the Power POS program is loaded on the server as indicated in the section titled:

Power Pos Windows 95/98 Installation on Server or Stand-Alone PC – Pages 65-71.

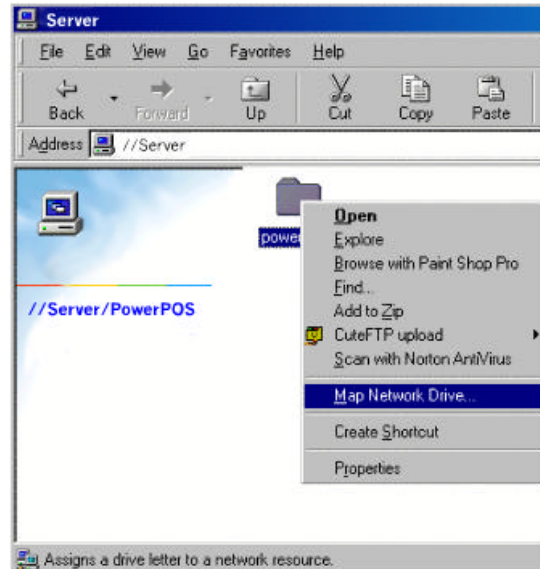
3. From the Server/Main PC, double left click on the **MY COMPUTER** icon on your windows desktop.
4. Right click on the “**C**” drive.
5. Left click on the **SHARING** option, the sharing properties window will appear.
6. Left click on the **FULL** option for the sharing type.
7. Left click on the **SHARED AS** option.
8. Type in the “shared as” name. (i.e. Station 1)
9. Left click on the **APPLY** button.
10. Left click on the **OK** button, this will take you back to the **MY COMPUTER** window.
11. Left click on the **X** in the upper right corner to close this window.



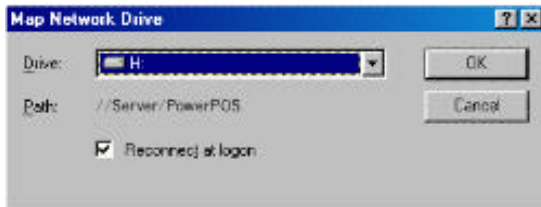
Mapping Power POS to Individual POS Stations

To map individual work stations to Power Pos on the Server / Main PC:

1. Double left click on **NETWORK NEIGHBORHOOD**, locate the **SERVER** folder and double left click on it.
2. Locate the drive that contains the Power POS Folder.
3. Right click on the Power POS folder.
4. Select **MAP NETWORK DRIVE** option.



5. In the **DRIVE** option, choose the next available drive letter. (i.e. "H")



6. Select the **RECONNECT AT LOGON** box. Click **OK**.
7. Next you must create a Power POS program icon to run the program. **(Detailed instructions available on pages 66- 67)**
8. Next you must set up the environment for the Power POS Program. **(Detailed instructions are available on pages 68 – 69)**