

## Barcode Printers

## Barcode Printers Set-Up

In general, Barcode Printers are usually attached to LPT2 and set-up the same way that you would set-up a receipt printer. See pages \_\_\_\_\_

**Note:** *Barcode printers will not print a test page unless the printer is in **DUMP MODE**. To put a barcode printer in **DUMP MODE** you must hold down the **PAPER FEED BUTTON** while powering on the printer. Once the printer is in dump mode, you will be able to print a test page.*

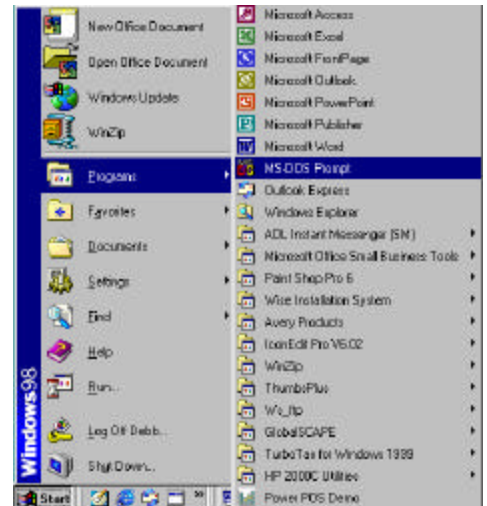
## Cash Drawers

## Cash Drawer / Printer Interface with an EPSON Printer

1. Remove the [6] Phillips head screws from the back of your cash drawer to reveal the female DIN connector. Attach the male DIN connection to the back of the cash drawer and replace the cover plate.

**Note:** Some cash drawers will come with the DIN connection pre-wired. In that case, disregard Step #1 and proceed to Step #2.

2. Connect the other end of the cable (RJ Connection) to your receipt printer.
3. Go to **START, PROGRAMS, MS-DOS PROMPT.**



4. From the **DOS PROMPT C:\WINDOWS**, enter the following statement:

**CD\POWER**

Then press **<ENTER>**.

5. From the **C:\POWER** prompt, type in the following statement:

**EDIT EPSON.BAT**

Then press **<ENTER>**.

6. With the **<CAPSLOCK>** key on, hold down the **<CTRL>** key and the **<P>** key. Then press **<ESC>**.

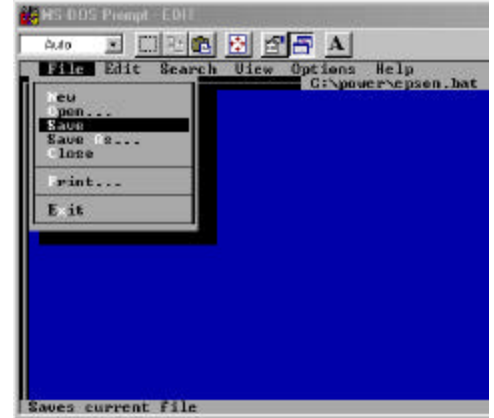
You will see an arrow pointing left on the screen.

7. Next type in a lower case **p0**.

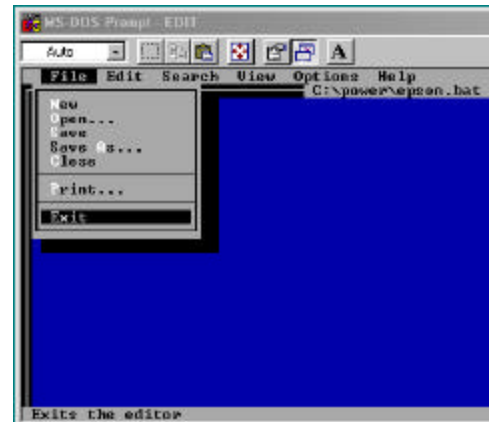
8. Hold down the **<ALT>** key and type **150**, release the **<ALT>** key. Repeat. This will add the following two characters to the screen: **ûû**.



9. Go to **FILE**, arrow down to **SAVE**, press **<ENTER>**.



10. Go to **FILE**, arrow down to **EXIT**, press **<ENTER>**.



11. Back at the **MS-DOS PROMPT** , type in the following statement:

**COPY CON OPEN.BAT**

Then press **<ENTER>**.

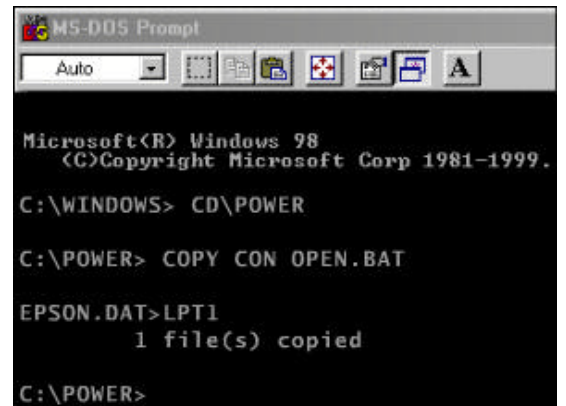
12. Then type the following:

**EPSON.DAT>LPT?**

(Where ?= the port number the printer is physically attached to)

Then press **<F6>** , and **<ENTER>**.

Now type in the word **OPEN** and press **<ENTER>** to open the cash drawer.

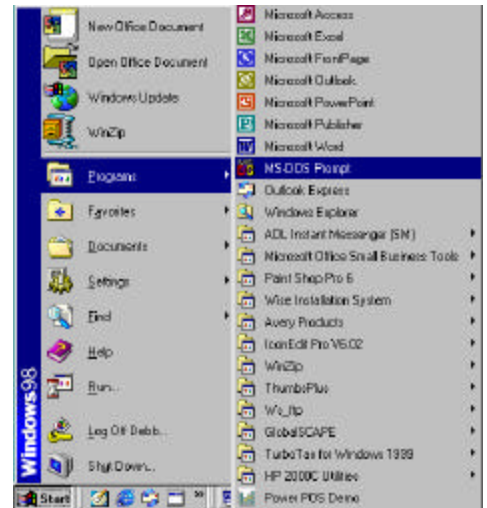


## Cash Drawer / Printer Interface (all other printers)

1. Remove the [6] Phillips head screws from the back of your cash drawer to reveal the female DIN connector. Attach the male DIN connection to the back of the cash drawer and replace the cover plate.

**Note:** Some cash drawers will come with the DIN connection pre-wired. In that case, disregard Step #1 and proceed to Step #2.

2. Connect the other end of the cable (RJ Connection) to your receipt printer.
3. Go to **START, PROGRAMS, MS-DOS PROMPT.**



4. From the **DOS PROMPT C:\WINDOWS**, enter the following statement:

**CD\POWER**

Then press **<ENTER>**.

5. From the **C:\POWER** prompt, type in the following statement:

**COPY CON BELL**

Then press **<ENTER>**. Choose **Y-Yes** to overwrite bell.

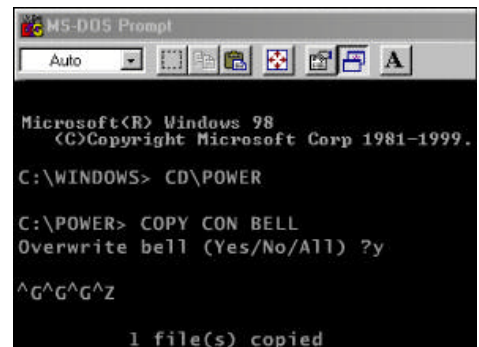
6. Hold down the **<CTRL>** key and type the following:

**GGG**

(**^^^G^^** will appear on the screen)

Press the **<F6>** and **<ENTER>**.

You should see that one file has been copied.



7. Next type the following:

**COPY CON OPEN.BAT**

Then press **<ENTER>**.

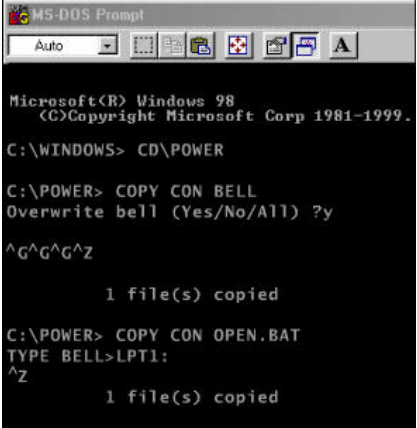
8. Then type the following statement:

**TYPE BELL>LPT?:** or **TYPE BELL>COM?:**

(Where ?= whatever port the printer is physically attached to)

Press **<F6>**, then **<ENTER>**.

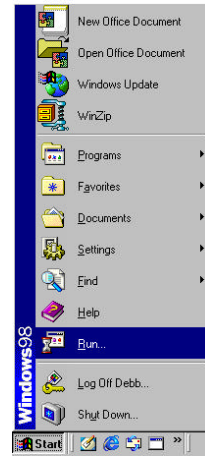
Now type in the word **OPEN** and press **<ENTER>** to open the cash drawer.



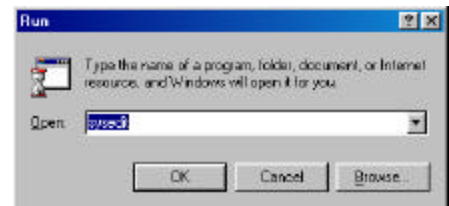
```
MS-DOS Prompt
Auto
Microsoft(R) Windows 98
(C)Copyright Microsoft Corp 1981-1999.
C:\WINDOWS> CD\POWER
C:\POWER> COPY CON BELL
Overwrite bell (Yes/No/All) ?y
^G^G^G^Z
1 file(s) copied
C:\POWER> COPY CON OPEN.BAT
TYPE BELL>LPT1:
^Z
1 file(s) copied
```

## Cash Drawer /Serial Interface

1. Physically attach cash drawer to a **COM PORT**.
2. Go to **START**, and **RUN**.



3. Type in **SYSEDIT**, then press **<ENTER>**.

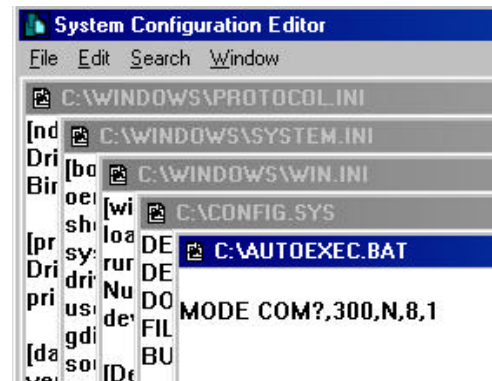


4. The **SYSTEM CONFIGURATION EDITOR** window will open.
5. Go to the **AUTOEXEC.BAT** window and type in the following statement:

**MODE COM?,300,N,8,1**

(Where ? is the COM port number that your cash drawer is connected to ie. 1,2,3 or 4)

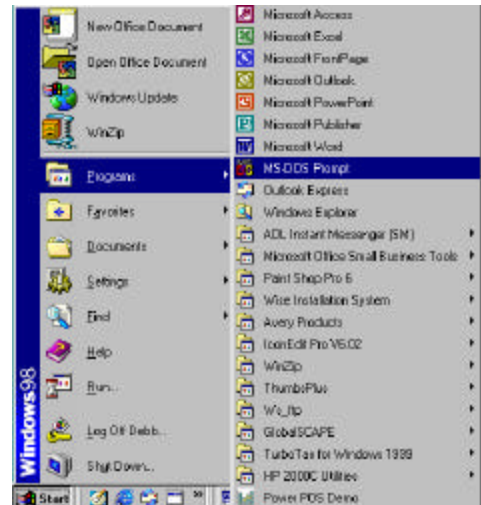
6. Go to **FILE**, and **EXIT**.  
When prompted to save changes, click **YES**.



At this point you will need to **RESTART** your computer.  
To do this, click on **START**, **SHUT DOWN**, and **RESTART**.



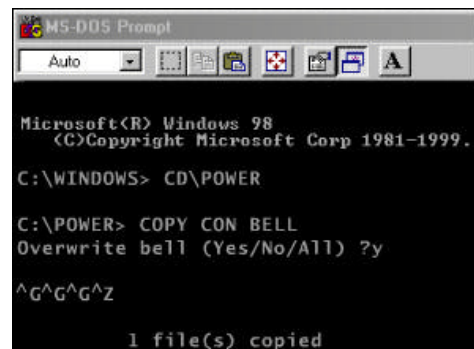
7. Go to **START, PROGRAMS,** and **MS-DOS PROMPT.**



8. From the **DOS PROMPT C:\WINDOWS,** enter the following statement:

**CD\POWER**

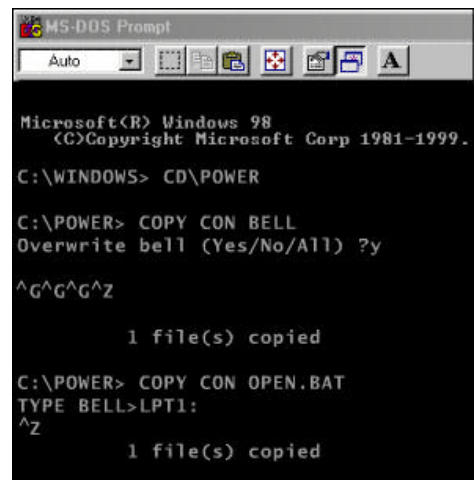
Then press **<ENTER>**.



9. From the **C:\POWER** prompt, type in the following statement:

**COPY CON BELL**

Then press **<ENTER>**. Choose **Y-Yes** to overwrite bell.



10. Hold down the **<CTRL>** key and type the following:

**GGG**

(**^G^G^G** will appear on the screen)

Press the **<F6>** and **<ENTER>**.

You should see that one file has been copied.

11. Next type the following:

**COPY CON OPEN.BAT**

Then press **<ENTER>**.



12. Then type the following statement:

**TYPE BELL>LPT?:** or **TYPE BELL>COM?:**

(Where ?= whatever port the printer is physically attached to)

Press **<F6>**, then **<ENTER>**.

You should see that one file has been copied.

Now type in the word **OPEN** and press **<ENTER>** to open the cash drawer.